

Product Name: Rab 31 Rabbit Polyclonal Antibody
Catalog #: APRab16751



Summary

Production Name	Rab 31 Rabbit Polyclonal Antibody
Description	Rabbit Polyclonal Antibody
Host	Rabbit
Application	WB
Reactivity	Human,Mouse,Rat

Performance

Conjugation	Unconjugated
Modification	Unmodified
Isotype	IgG
Clonality	Polyclonal
Form	Liquid
Storage	Store at 4°C short term. Aliquot and store at -20°C long term. Avoid freeze/thaw cycles.
Buffer	Liquid in PBS containing 50% glycerol, 0.5% BSA and 0.02% New type preservative N.
Purification	Affinity purification

Immunogen

Gene Name	RAB31
Alternative Names	RAB31; RAB22B; Ras-related protein Rab-31; Ras-related protein Rab-22B
Gene ID	11031.0
SwissProt ID	Q13636.Synthesized peptide derived from Rab 31 . at AA range: 50-130

Application

Dilution Ratio	WB 1:500-2000 ELISA 2000-20000
Molecular Weight	21kD

Background

Small GTP-binding proteins of the RAB family, such as RAB31, play essential roles in vesicle and granule targeting (Bao et al., 2002 [PubMed 11784320]).[supplied by OMIM, Jul 2009],similarity:Belongs to the small GTPase superfamily. Rab

Product Name: Rab 31 Rabbit Polyclonal Antibody
Catalog #: AP Rab16751

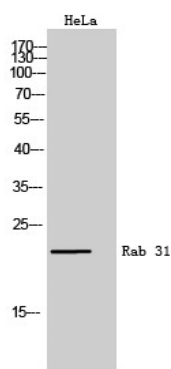


family, tissue specificity: Highest expression in placenta and brain with lower levels in heart and lung. Not detected in liver, skeletal muscle, kidney or pancreas,

Research Area

Endocytosis;

Image Data



Western Blot analysis of HeLa cells using Rab 31 Polyclonal Antibody

Note

For research use only.