

Product Name: Rab 11B Rabbit Polyclonal Antibody
Catalog #: APRab16741



Summary

Production Name	Rab 11B Rabbit Polyclonal Antibody
Description	Rabbit Polyclonal Antibody
Host	Rabbit
Application	WB
Reactivity	Human,Mouse,Rat

Performance

Conjugation	Unconjugated
Modification	Unmodified
Isotype	IgG
Clonality	Polyclonal
Form	Liquid
Storage	Store at 4°C short term. Aliquot and store at -20°C long term. Avoid freeze/thaw cycles.
Buffer	Liquid in PBS containing 50% glycerol, 0.5% BSA and 0.02% New type preservative N.
Purification	Affinity purification

Immunogen

Gene Name	RAB11B
Alternative Names	RAB11B; YPT3; Ras-related protein Rab-11B; GTP-binding protein YPT3
Gene ID	9230.0
SwissProt ID	Q15907.The antiserum was produced against synthesized peptide derived from human RAB11B. AA range:164-213

Application

Dilution Ratio	WB 1:500-2000
Molecular Weight	28kD

Background

The Ras superfamily of small GTP-binding proteins, which includes the Ras (see MIM 190020), Ral (see MIM 179550), Rho

Product Name: Rab 11B Rabbit Polyclonal Antibody
Catalog #: AP Rab16741

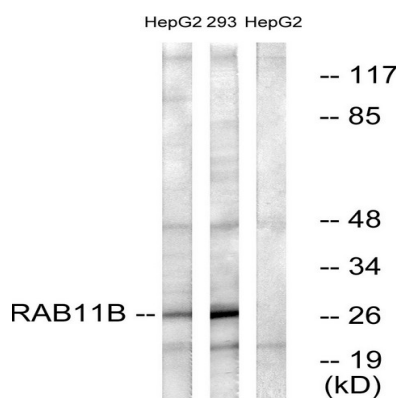


(see MIM 165390), Rap (see MIM 179520), and Rab (see MIM 179508) families, is involved in controlling a diverse set of essential cellular functions. The Rab family, including RAB11B, appears to play a critical role in regulating exocytotic and endocytotic pathways (summary by Zhu et al., 1994 [PubMed 7811277]).[supplied by OMIM, Nov 2010],function:Possesses GTPase activity.,similarity:Belongs to the small GTPase superfamily. Rab family.,subunit:Interacts with RAB11FIP1, RAB11FIP2, RAB11FIP3 and RAB11FIP4.,

Research Area

Endocytosis;

Image Data



Western blot analysis of lysates from HepG2 and 293 cells, using RAB11B Antibody. The lane on the right is blocked with the synthesized peptide.

Note

For research use only.