

Product Name: QM Rabbit Polyclonal Antibody
Catalog #: APRab16729



Summary

Production Name	QM Rabbit Polyclonal Antibody
Description	Rabbit Polyclonal Antibody
Host	Rabbit
Application	WB
Reactivity	Human,Mouse,Rat,Cat

Performance

Conjugation	Unconjugated
Modification	Unmodified
Isotype	IgG
Clonality	Polyclonal
Form	Liquid
Storage	Store at 4°C short term. Aliquot and store at -20°C long term. Avoid freeze/thaw cycles.
Buffer	Liquid in PBS containing 50% glycerol, 0.5% BSA and 0.02% New type preservative N.
Purification	Affinity purification

Immunogen

Gene Name	RPL10
Alternative Names	RPL10; DXS648E; QM; 60S ribosomal protein L10; Laminin receptor homolog; Protein QM; Tumor suppressor QM
Gene ID	6134.0
SwissProt ID	P27635.The antiserum was produced against synthesized peptide derived from human 60S Ribosomal Protein L10. AA range:1-50

Application

Dilution Ratio	WB 1:500-2000
Molecular Weight	25kD

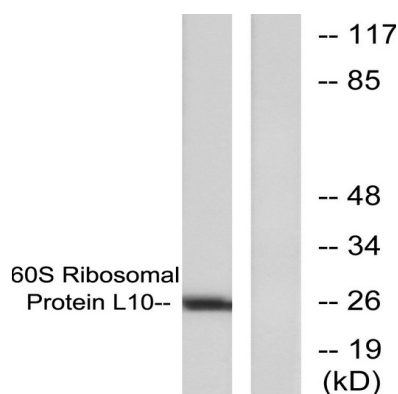
Background

This gene encodes a ribosomal protein that is a component of the 60S ribosome subunit. The related protein in chicken can bind to c-Jun and can repress c-Jun-mediated transcriptional activation. Some studies have detected an association between variation in this gene and autism spectrum disorders, though others do not detect this relationship. There are multiple pseudogenes of this gene dispersed throughout the genome. Alternative splicing results in multiple transcript variants. [provided by RefSeq, Jan 2015],developmental stage:Down-regulated during adipocyte, kidney, and heart differentiation.,disease:Defects in RPL10 may be the cause of susceptibility to X-linked autism [MIM:209850]. Autism is a pervasive developmental disorder (PDD), prototypically characterized by impairments in reciprocal social interaction and communication, restricted and stereotyped patterns of interests and activities, and the presence of developmental abnormalities by 3 years of age.,similarity:Belongs to the ribosomal protein L10e family.,

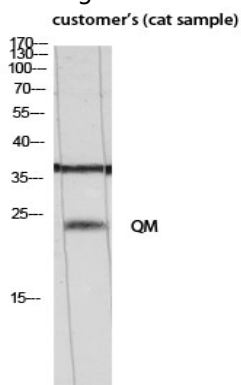
Research Area

Ribosome;

Image Data



Western blot analysis of lysates from K562 cells, treated with Insulin 0.01u/ml 15min, using 60S Ribosomal Protein L10 Antibody. The lane on the right is blocked with the synthesized peptide.



Western Blot analysis of customer 's (cat sample) using QM Polyclonal Antibody diluted at 1: 500

Product Name: QM Rabbit Polyclonal Antibody
Catalog #: APRab16729



Note

For research use only.