

Product Name: PSK-H1 Rabbit Polyclonal Antibody
Catalog #: APRab16604



Summary

Production Name	PSK-H1 Rabbit Polyclonal Antibody
Description	Rabbit Polyclonal Antibody
Host	Rabbit
Application	WB,ELISA
Reactivity	Human,Mouse

Performance

Conjugation	Unconjugated
Modification	Unmodified
Isotype	IgG
Clonality	Polyclonal
Form	Liquid
Storage	Store at 4°C short term. Aliquot and store at -20°C long term. Avoid freeze/thaw cycles.
Buffer	Liquid in PBS containing 50% glycerol, 0.5% BSA and 0.02% New type preservative N.
Purification	Affinity purification

Immunogen

Gene Name	PSKH1
Alternative Names	PSKH1; Serine/threonine-protein kinase H1; Protein serine kinase H1; PSK-H1
Gene ID	5681.0
SwissProt ID	P11801.The antiserum was produced against synthesized peptide derived from human KPSH1. AA range:261-310

Application

Dilution Ratio	WB 1:500 - 1:2000. ELISA: 1:20000
Molecular Weight	48kD

Background

Product Name: PSK-H1 Rabbit Polyclonal Antibody
Catalog #: APRab16604

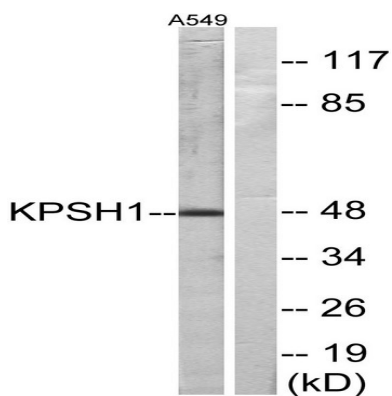


catalytic activity:ATP + a protein = ADP + a phosphoprotein.,enzyme regulation:Activity depends on Ca(2+) concentration.,function:May be a SFC-associated serine kinase (splicing factor compartment-associated serine kinase) with a role in intranuclear SR protein (non-snRNP splicing factors containing a serine/arginine-rich domain) trafficking and pre-mRNA processing.,PTM:Autophosphorylated on serine residues.,PTM:Myristoylated. Required for membrane association. Prerequisite for palmitoylation to occur.,PTM:Palmitoylated.,similarity:Belongs to the protein kinase superfamily. CAMK Ser/Thr protein kinase family.,similarity:Contains 1 protein kinase domain.,subcellular location:Localized in the Brefeldin A-sensitive Golgi compartment, at centrosomes, in the nucleus with a somewhat speckle-like presence, membrane-associated to the endoplasmic reticulum (ER) and the plasma membrane (PM), and more diffusely in the cytoplasm. Found to concentrate in splicing factor compartments (SFCs) within the nucleus of interphase cells. The acylation-negative form may be only cytoplasmic and nuclear. Acylation seems to allow the sequestering to the intracellular membranes. Myristoylation may mediate targeting to the intracellular non-Golgi membranes and palmitoylation may mediate the targeting to the Golgi membranes. Dual acylation is required to stabilize the interaction with Golgi membranes.,subunit:Homodimer.,tissue specificity:Expressed in all tissues and cell lines tested with the highest level of abundance in testis.,catalytic activity:ATP + a protein = ADP + a phosphoprotein.,enzyme regulation:Activity depends on Ca(2+) concentration.,function:May be a SFC-associated serine kinase (splicing factor compartment-associated serine kinase) with a role in intranuclear SR protein (non-snRNP splicing factors containing a serine/arginine-rich domain) trafficking and pre-mRNA processing.,PTM:Autophosphorylated on serine residues.,PTM:Myristoylated. Required for membrane association. Prerequisite for palmitoylation to occur.,PTM:Palmitoylated.,similarity:Belongs to the protein kinase superfamily. CAMK Ser/Thr protein kinase family.,similarity:Contains 1 protein kinase domain.,subcellular location:Localized in the Brefeldin A-sensitive Golgi compartment, at centrosomes, in the nucleus with a somewhat speckle-like presence, membrane-associated to the endoplasmic reticulum (ER) and the plasma membrane (PM), and more diffusely in the cytoplasm. Found to concentrate in splicing factor compartments (SFCs) within the nucleus of interphase cells. The acylation-negative form may be only cytoplasmic and nuclear. Acylation seems to allow the sequestering to the intracellular membranes. Myristoylation may mediate targeting to the intracellular non-Golgi membranes and palmitoylation may mediate the targeting to the Golgi membranes. Dual acylation is required to stabilize the interaction with Golgi membranes.,subunit:Homodimer.,tissue specificity:Expressed in all tissues and cell lines tested with the highest level of abundance in testis.,

Research Area

Image Data

Product Name: PSK-H1 Rabbit Polyclonal Antibody
Catalog #: APRab16604



Western blot analysis of lysates from A549 cells, using KPSH1 Antibody. The lane on the right is blocked with the synthesized peptide.



Western Blot analysis of various cells using PSK-H1 Polyclonal Antibody

Note

For research use only.