

Product Name: PRP6 Rabbit Polyclonal Antibody
Catalog #: APRab16542



Summary

Production Name	PRP6 Rabbit Polyclonal Antibody
Description	Rabbit Polyclonal Antibody
Host	Rabbit
Application	IHC,ELISA
Reactivity	Human,Mouse,Rat

Performance

Conjugation	Unconjugated
Modification	Unmodified
Isotype	IgG
Clonality	Polyclonal
Form	Liquid
Storage	Store at 4°C short term. Aliquot and store at -20°C long term. Avoid freeze/thaw cycles.
Buffer	Liquid in PBS containing 50% glycerol, 0.5% BSA and 0.02% New type preservative N.
Purification	Affinity purification

Immunogen

Gene Name	PRPF6 PRPF6; C20orf14; Pre-mRNA-processing factor 6; Androgen receptor N-terminal
Alternative Names	domain-transactivating protein 1; ANT-1; PRP6 homolog; U5 snRNP-associated 102 kDa protein; U5-102 kDa protein
Gene ID	24148.0
SwissProt ID	O94906.The antiserum was produced against synthesized peptide derived from human PRPF6. AA range:747-796

Application

Dilution Ratio	IHC 1:100-1:300 ELISA: 1:10000
Molecular Weight	110kD

Product Name: PRP6 Rabbit Polyclonal Antibody
Catalog #: AP Rab16542



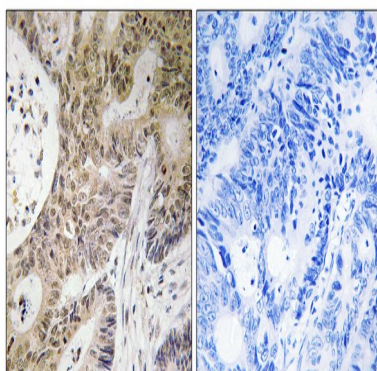
Background

The protein encoded by this gene appears to be involved in pre-mRNA splicing, possibly acting as a bridging factor between U5 and U4/U6 snRNPs in formation of the spliceosome. The encoded protein also can bind androgen receptor, providing a link between transcriptional activation and splicing. [provided by RefSeq, Jul 2008],function:Involved in pre-mRNA splicing. May act in the tri-snRNP complex as a bridging factor between U5 and U4/U6 snRNPs in the late step of spliceosome assembly. May be necessary for tri-snRNP formation.,similarity:Contains 9 HAT repeats.,subunit:Associates with the U5 snRNP particle (containing the 40 kDa, 52 kDa, 116 kDa, 200 kDa and 220 kDa proteins) probably via interaction(s) with the 220 kDa and/or other proteins. Associates with U4/U6 snRNP particle (containing the 15.5 kDa, 20 kDa/60kDa/90kDa heteromer, LSm proteins LSm2-8, 61 kDa and Sm proteins). Interacts with ARAF1. Identified in the spliceosome C complex, at least composed of AQR, ASCC3L1, C19orf29, CDC40, CDC5L, CRNKL1, DDX23, DDX41, DDX48, DDX5, DGCR14, DHX35, DHX38, DHX8, EFTUD2, FRG1, GPATC1, HNRPA1, HNRPA2B1, HNRPA3, HNRPC, HNRPF, HNRPH1, HNRPK, HNRPM, HNRPR, HNRPU, KIAA1160, KIAA1604, LSM2, LSM3, MAGOH, MORG1, PABPC1, PLRG1, PNN, PPIE, PPIL1, PPIL3, PPWD1, PRPF19, PRPF4B, PRPF6, PRPF8, RALY, RBM22, RBM8A, RBMX, SART1, SF3A1, SF3A2, SF3A3, SF3B1, SF3B2, SF3B3, SFRS1, SKIV2L2, SNRPA1, SNRPB, SNRPB2, SNRPD1, SNRPD2, SNRPD3, SNRPE, SNRPF, SNRPG, SNW1, SRRM1, SRRM2, SYF2, SYNCRIP, TFIP11, THOC4, U2AF1, WDR57, XAB2 and ZCCHC8.,

Research Area

Spliceosome;

Image Data



Immunohistochemistry analysis of paraffin-embedded human colon carcinoma tissue, using PRPF6 Antibody. The picture on the right is blocked with the synthesized peptide.

Note

For research use only.