

Product Name: Probetacellulin Rabbit Polyclonal Antibody
Catalog #: APRab16513

Summary

Production Name	Probetacellulin Rabbit Polyclonal Antibody
Description	Rabbit Polyclonal Antibody
Host	Rabbit
Application	WB,ELISA
Reactivity	Human,Rat,Mouse

Performance

Conjugation	Unconjugated
Modification	Unmodified
Isotype	IgG
Clonality	Polyclonal
Form	Liquid
Storage	Store at 4°C short term. Aliquot and store at -20°C long term. Avoid freeze/thaw cycles.
Buffer	Liquid in PBS containing 50% glycerol, 0.5% BSA and 0.02% New type preservative N.
Purification	Affinity purification

Immunogen

Gene Name	BTC
Alternative Names	BTC; Probetacellulin
Gene ID	685.0
SwissProt ID	P35070.The antiserum was produced against synthesized peptide derived from the Internal region of human BTC. AA range:21-70

Application

Dilution Ratio	WB 1:500-2000 ELISA 2000-20000
Molecular Weight	20kD

Product Name: Probetacellulin Rabbit Polyclonal Antibody
Catalog #: APRab16513

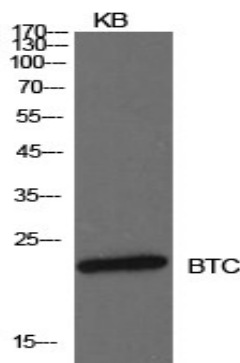
Background

This gene encodes a member of the epidermal growth factor (EGF) family of proteins. Alternative splicing results in multiple transcript variants, at least one of which encodes a preproprotein that is proteolytically processed to generate the secreted growth factor. A secreted form and a membrane-anchored form of this protein bind to multiple different EGF receptors. This protein promotes pancreatic cell proliferation and insulin secretion, as well as retinal vascular permeability. Mutations in this gene may be associated with type 2 diabetes in human patients. [provided by RefSeq, Nov 2015],disease:Betacellulin from beta cells could play a role in the vascular complications associated with diabetes.,function:Potent mitogen for retinal pigment epithelial cells and vascular smooth muscle cells. The effects of betacellulin are probably mediated by the EGF receptor and other related receptors.,similarity:Contains 1 EGF-like domain.,subunit:Monomer.,tissue specificity:Synthesized in several tissues and tumor cells. Predominantly expressed in pancreas and small intestine.,

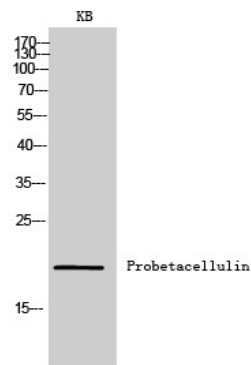
Research Area

ErbB_HER;

Image Data



Western Blot analysis of KB cells using Probetacellulin Polyclonal Antibody.. Secondary antibody was diluted at 1:20000



Western Blot analysis of KB cells using Probetacellulin Polyclonal Antibody. Secondary antibody was diluted at 1:20000



**Product Name: Probetacellulin Rabbit Polyclonal
Antibody**
Catalog #: APRab16513

Note

For research use only.