

**Product Name: PR38B Rabbit Polyclonal Antibody**  
**Catalog #: APRab16447**



## Summary

<b>Production Name</b>	PR38B Rabbit Polyclonal Antibody
<b>Description</b>	Rabbit Polyclonal Antibody
<b>Host</b>	Rabbit
<b>Application</b>	WB
<b>Reactivity</b>	Human,Rat,Mouse

## Performance

<b>Conjugation</b>	Unconjugated
<b>Modification</b>	Unmodified
<b>Isotype</b>	IgG
<b>Clonality</b>	Polyclonal
<b>Form</b>	Liquid
<b>Storage</b>	Store at 4°C short term. Aliquot and store at -20°C long term. Avoid freeze/thaw cycles.
<b>Buffer</b>	Liquid in PBS containing 50% glycerol, and 0.02% New type preservative N.
<b>Purification</b>	Affinity purification

## Immunogen

<b>Gene Name</b>	PRPF38B
<b>Alternative Names</b>	
<b>Gene ID</b>	55119.0
<b>SwissProt ID</b>	Q5VTL8.Synthesized peptide derived from human protein . at AA range: 180-260

## Application

<b>Dilution Ratio</b>	WB 1:500-2000 ELISA 1:5000-20000
<b>Molecular Weight</b>	60kD

## Background

function:May be required for pre-mRNA splicing .,PTM:Phosphorylated upon DNA damage, probably by ATM or ATR.,similarity:Belongs to the PRP38 family.,function:May be required for pre-mRNA splicing .,PTM:Phosphorylated upon

**Product Name: PR38B Rabbit Polyclonal Antibody**  
**Catalog #: APRab16447**

---

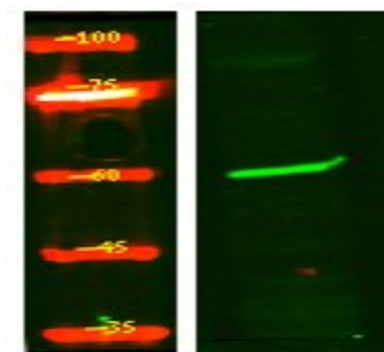


DNA damage, probably by ATM or ATR.,similarity:Belongs to the PRP38 family.,

## Research Area

Spliceosome;

## Image Data



Western Blot analysis of HEK293 lysis, using primary antibody at 1:1000 dilution. Secondary antibody was diluted at 1:10000

## Note

For research use only.