

Product Name: POTE-8 Rabbit Polyclonal Antibody
Catalog #: APRab16384



Summary

Production Name	POTE-8 Rabbit Polyclonal Antibody
Description	Rabbit Polyclonal Antibody
Host	Rabbit
Application	IHC,ELISA
Reactivity	Human,Rat,Mouse

Performance

Conjugation	Unconjugated
Modification	Unmodified
Isotype	IgG
Clonality	Polyclonal
Form	Liquid
Storage	Store at 4°C short term. Aliquot and store at -20°C long term. Avoid freeze/thaw cycles.
Buffer	Liquid in PBS containing 50% glycerol, 0.5% BSA and 0.02% New type preservative N.
Purification	Affinity purification

Immunogen

Gene Name	POTEA
Alternative Names	POTEA; A26A1; POTE8; POTE ankyrin domain family member A; ANKRD26-like family A member 1; Prostate; ovary, testis-expressed protein on chromosome 8; POTE-8
Gene ID	340441.0
SwissProt ID	Q6S8J7.The antiserum was produced against synthesized peptide derived from human POTEA. AA range:375-424

Application

Dilution Ratio	IHC 1:100-1:300 ELISA: 1:5000
Molecular Weight	

Background

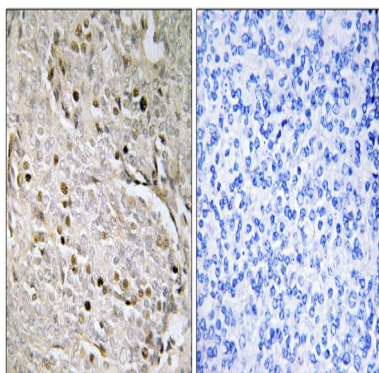
Product Name: POTE-8 Rabbit Polyclonal Antibody
Catalog #: APRab16384



similarity:Belongs to the POTE family.,similarity:Contains 5 ANK repeats.,similarity:Belongs to the POTE family.,similarity:Contains 5 ANK repeats.,

Research Area

Image Data



Immunohistochemistry analysis of paraffin-embedded human prostate carcinoma, using POTE8 Antibody. The picture on the right is blocked with the synthesized peptide.

Note

For research use only.