

Product Name: POTE14/22 Rabbit Polyclonal Antibody
Catalog #: AP Rab16381



Summary

Production Name	POTE14/22 Rabbit Polyclonal Antibody
Description	Rabbit Polyclonal Antibody
Host	Rabbit
Application	WB,IHC,ELISA
Reactivity	Human,Rat,Mouse

Performance

Conjugation	Unconjugated
Modification	Unmodified
Isotype	IgG
Clonality	Polyclonal
Form	Liquid
Storage	Store at 4°C short term. Aliquot and store at -20°C long term. Avoid freeze/thaw cycles.
Buffer	Liquid in PBS containing 50% glycerol, 0.5% BSA and 0.02% New type preservative N.
Purification	Affinity purification

Immunogen

Gene Name	POTEG POTEG; A26C2; POTE14; POTE ankyrin domain family member G; ANKRD26-like family C member 2; Prostate; ovary, testis-expressed protein on chromosome 14; POTE-14;
Alternative Names	POTEH; A26C3; ACTBL1; POTE22; POTE ankyrin domain family member H; ANKRD26-like
Gene ID	404785/23784
SwissProt ID	Q6S5H5/Q6S545/A6NI47.The antiserum was produced against synthesized peptide derived from human POTEG. AA range:401-450

Application

Dilution Ratio	WB 1:500 - 1:2000. IHC 1:100 - 1:300. ELISA: 1:40000..
Molecular Weight	67kD

Product Name: POTE14/22 Rabbit Polyclonal Antibody
Catalog #: APRab16381

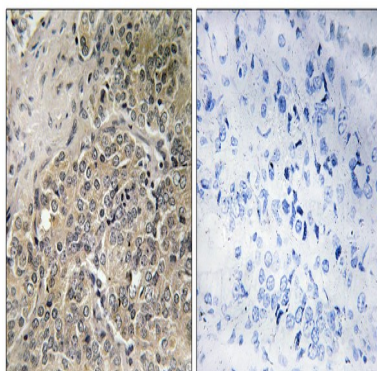


Background

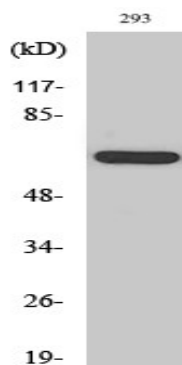
similarity:Belongs to the POTE family.,similarity:Contains 5 ANK repeats.,similarity:Belongs to the POTE family.,similarity:Contains 5 ANK repeats.,

Research Area

Image Data



Immunohistochemistry analysis of paraffin-embedded human prostate carcinoma, using A26C2/3 Antibody. The picture on the right is blocked with the synthesized peptide.



Western Blot analysis of various cells using POTE14/22 Polyclonal Antibody

Note

For research use only.