

Summary

Production Name	POLR3D Rabbit Polyclonal Antibody
Description	Rabbit Polyclonal Antibody
Host	Rabbit
Application	WB,ELISA
Reactivity	Human,Mouse

Performance

Conjugation	Unconjugated
Modification	Unmodified
Isotype	IgG
Clonality	Polyclonal
Form	Liquid
Storage	Store at 4°C short term. Aliquot and store at -20°C long term. Avoid freeze/thaw cycles.
Buffer	Liquid in PBS containing 50% glycerol, 0.5% BSA and 0.02% New type preservative N.
Purification	Affinity purification

Immunogen

Gene Name	POLR3D
Alternative Names	POLR3D; BN51; BN51T; DNA-directed RNA polymerase III subunit RPC4; RNA polymerase III subunit C4; DNA-directed RNA polymerase III subunit D; Protein BN51; RNA polymerase III 47 kDa subunit; RPC53 homolog
Gene ID	661.0
SwissProt ID	P05423.The antiserum was produced against synthesized peptide derived from human RPC4. AA range:281-330

Application

Dilution Ratio	WB 1:500-2000;ELISA 2000-20000
Molecular Weight	38kD

Product Name: POLR3D Rabbit Polyclonal Antibody
Catalog #: AP Rab16361



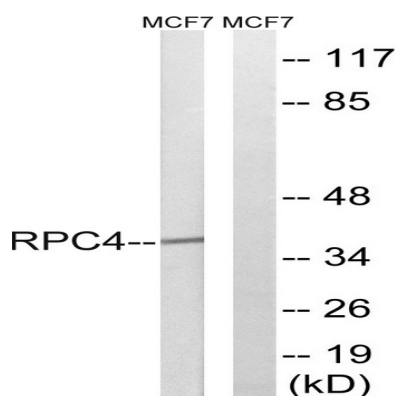
Background

This gene complements a temperature-sensitive mutant isolated from the BHK-21 Syrian hamster cell line. It leads to a block in progression through the G1 phase of the cell cycle at nonpermissive temperatures. [provided by RefSeq, Jul 2008],function:DNA-dependent RNA polymerase catalyzes the transcription of DNA into RNA using the four ribonucleoside triphosphates as substrates. Specific peripheric component of RNA polymerase III which synthesizes small RNAs, such as 5S rRNA and tRNAs.,similarity:Belongs to the eukaryotic RPC4/POLR3D RNA polymerase subunit family.,subunit:Component of the RNA polymerase III (Pol III) complex consisting of 17 subunits (By similarity). Interacts with POLR3E/RPC5.,

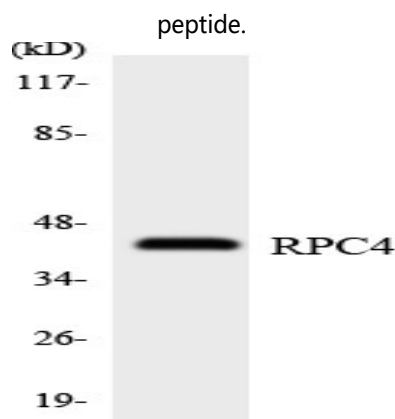
Research Area

Purine metabolism;Pyrimidine metabolism;RNA polymerase;Cytosolic DNA-sensing pathway;

Image Data



Western blot analysis of lysates from MCF-7 cells, using RPC4 Antibody. The lane on the right is blocked with the synthesized peptide.



Western blot analysis of the lysates from HepG2 cells using RPC4 antibody.

Note

For research use only.

Product Name: POLR3D Rabbit Polyclonal Antibody
Catalog #: APRab16361

