

Product Name: POLR1E Rabbit Polyclonal Antibody
Catalog #: APRab16354



Summary

Production Name	POLR1E Rabbit Polyclonal Antibody
Description	Rabbit Polyclonal Antibody
Host	Rabbit
Application	IHC,ELISA
Reactivity	Human,Rat,Mouse

Performance

Conjugation	Unconjugated
Modification	Unmodified
Isotype	IgG
Clonality	Polyclonal
Form	Liquid
Storage	Store at 4°C short term. Aliquot and store at -20°C long term. Avoid freeze/thaw cycles.
Buffer	Liquid in PBS containing 50% glycerol, 0.5% BSA and 0.02% New type preservative N.
Purification	Affinity purification

Immunogen

Gene Name	POLR1E
Alternative Names	POLR1E; PAF53; PRAF1; DNA-directed RNA polymerase I subunit RPA49; RNA polymerase I subunit A49; DNA-directed RNA polymerase I subunit E; RNA polymerase I-associated factor 1; RNA polymerase I-associated factor 53
Gene ID	64425.0
SwissProt ID	Q9GZS1.Synthesized peptide derived from the Internal region of human POLR1E.

Application

Dilution Ratio	IHC 1:100-1:300 ELISA: 1:10000
Molecular Weight	49kD

Background

Product Name: POLR1E Rabbit Polyclonal Antibody
Catalog #: AP Rab16354

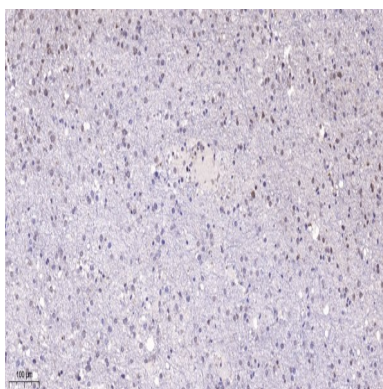


function:DNA-dependent RNA polymerase catalyzes the transcription of DNA into RNA using the four ribonucleoside triphosphates as substrates. Component of RNA polymerase I which synthesizes ribosomal RNA precursors. Appears to be involved in the formation of the initiation complex at the promoter by mediating the interaction between Pol I and UBTF/UBF.,similarity:Belongs to the eukaryotic RPA49/POLR1E RNA polymerase subunit family.,subunit:Component of the RNA polymerase I (Pol I) complex consisting of at least 13 subunits (By similarity). Interacts with PAF49/CD3EAP. Also binds UBTF/UBF.,function:DNA-dependent RNA polymerase catalyzes the transcription of DNA into RNA using the four ribonucleoside triphosphates as substrates. Component of RNA polymerase I which synthesizes ribosomal RNA precursors. Appears to be involved in the formation of the initiation complex at the promoter by mediating the interaction between Pol I and UBTF/UBF.,similarity:Belongs to the eukaryotic RPA49/POLR1E RNA polymerase subunit family.,subunit:Component of the RNA polymerase I (Pol I) complex consisting of at least 13 subunits (By similarity). Interacts with PAF49/CD3EAP. Also binds UBTF/UBF.,

Research Area

Purine metabolism;Pyrimidine metabolism;RNA polymerase;

Image Data



Immunohistochemical analysis of paraffin-embedded human brain. 1, Tris-EDTA,pH9.0 was used for antigen retrieval. 2 Antibody was diluted at 1:200 (4° overnight.3,Secondary antibody was diluted at 1:200 (room temperature, 45min) .

Note

For research use only.