

**Product Name: POLDIP3 Rabbit Polyclonal Antibody**  
**Catalog #: APRab16349**



## Summary

<b>Production Name</b>	POLDIP3 Rabbit Polyclonal Antibody
<b>Description</b>	Rabbit Polyclonal Antibody
<b>Host</b>	Rabbit
<b>Application</b>	WB,IHC,ELISA
<b>Reactivity</b>	Human,Rat,Mouse

## Performance

<b>Conjugation</b>	Unconjugated
<b>Modification</b>	Unmodified
<b>Isotype</b>	IgG
<b>Clonality</b>	Polyclonal
<b>Form</b>	Liquid
<b>Storage</b>	Store at 4°C short term. Aliquot and store at -20°C long term. Avoid freeze/thaw cycles.
<b>Buffer</b>	Liquid in PBS containing 50% glycerol, 0.5% BSA and 0.02% New type preservative N.
<b>Purification</b>	Affinity purification

## Immunogen

<b>Gene Name</b>	POLDIP3
<b>Alternative Names</b>	POLDIP3; KIAA1649; PDIP46; Polymerase delta-interacting protein 3; 46 kDa DNA polymerase delta interaction protein; p46; S6K1 Aly/REF-like target; SKAR
<b>Gene ID</b>	84271.0
<b>SwissProt ID</b>	Q9BY77.The antiserum was produced against synthesized peptide derived from human POLDIP3. AA range:348-397

## Application

<b>Dilution Ratio</b>	WB 1:500 - 1:2000. IHC 1:100 - 1:300. ELISA: 1:40000..
<b>Molecular Weight</b>	46kD

**Product Name: POLDIP3 Rabbit Polyclonal Antibody**  
**Catalog #: AP Rab16349**



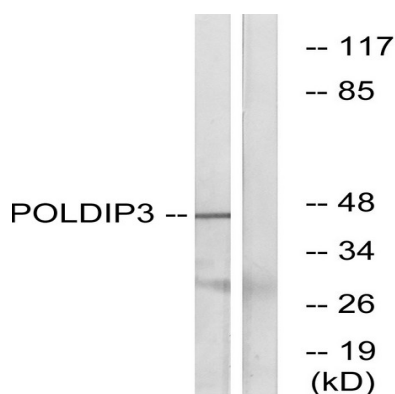
## Background

This gene encodes an RRM (RNA recognition motif)-containing protein that participates in the regulation of translation by recruiting ribosomal protein S6 kinase beta-1 to mRNAs. Alternative splicing results in multiple transcript variants.

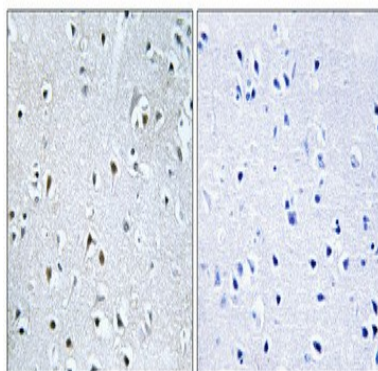
[provided by RefSeq, Jul 2013],PTM:Phosphorylated upon DNA damage, probably by ATM or ATR.,similarity:Contains 1 RRM (RNA recognition motif) domain.,subunit:Interacts with POLD2.,

## Research Area

## Image Data



Western blot analysis of lysates from RAW264.7 cells, using POLDIP3 Antibody. The lane on the right is blocked with the synthesized peptide.



Immunohistochemical analysis of paraffin-embedded Human brain. Antibody was diluted at 1:100 (4°,overnight) . High-pressure and temperature Tris-EDTA,pH8.0 was used for antigen retrieval. Negative contrl (right) obtained from antibody was pre-absorbed by immunogen peptide.

## Note

For research use only.