

**Product Name: POLD4 Rabbit Polyclonal Antibody**  
**Catalog #: APRab16348**



## Summary

<b>Production Name</b>	POLD4 Rabbit Polyclonal Antibody
<b>Description</b>	Rabbit Polyclonal Antibody
<b>Host</b>	Rabbit
<b>Application</b>	IHC,ELISA
<b>Reactivity</b>	Human,Rat,Mouse

## Performance

<b>Conjugation</b>	Unconjugated
<b>Modification</b>	Unmodified
<b>Isotype</b>	IgG
<b>Clonality</b>	Polyclonal
<b>Form</b>	Liquid
<b>Storage</b>	Store at 4°C short term. Aliquot and store at -20°C long term. Avoid freeze/thaw cycles.
<b>Buffer</b>	Liquid in PBS containing 50% glycerol, 0.5% BSA and 0.02% New type preservative N.
<b>Purification</b>	Affinity purification

## Immunogen

<b>Gene Name</b>	POLD4 POLDS
<b>Alternative Names</b>	DNA polymerase delta subunit 4 (DNA polymerase delta subunit p12)
<b>Gene ID</b>	57804.0
<b>SwissProt ID</b>	Q9HCU8.Synthesized peptide derived from human POLD4 AA range: 43-93

## Application

<b>Dilution Ratio</b>	IHC 1:100-1:300 ELISA: 1:5000
<b>Molecular Weight</b>	

## Background

This gene encodes the smallest subunit of DNA polymerase delta. DNA polymerase delta possesses both polymerase and 3' to 5' exonuclease activity and plays a critical role in DNA replication and repair. The encoded protein

**Product Name: POLD4 Rabbit Polyclonal Antibody**  
**Catalog #: APRab16348**

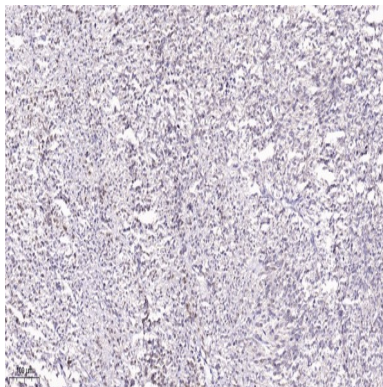
---



enhances the activity of DNA polymerase delta and plays a role in fork repair and stabilization through interactions with the DNA helicase Bloom syndrome protein. Alternatively spliced transcript variants encoding multiple isoforms have been observed for this gene. [provided by RefSeq, Mar 2012],function:Required for optimal DNA polymerase delta activity. May contribute to PCNA-dependent activity of DNA polymerase delta.,similarity:Belongs to the DNA polymerase delta subunit 4 family.,subunit:Heterotetramer composed of subunits of 125 kDa, 50 kDa, 66 kDa and 12 kDa. Interacts with WRNIP1. Interacts with POLD4, POLD2, POLD1 and PCNA.,

## Research Area

## Image Data



Immunohistochemical analysis of paraffin-embedded human Small intestinal stromal tumor. 1, Tris-EDTA,pH9.0 was used for antigen retrieval. 2 Antibody was diluted at 1:200 (4° overnight.3,Secondary antibody was diluted at 1:200 (room temperature, 45min) .

## Note

For research use only.