

Product Name: PMS2/PMS2CL Rabbit Polyclonal Antibody
Catalog #: APRab16314

Summary

Production Name	PMS2/PMS2CL Rabbit Polyclonal Antibody
Description	Rabbit Polyclonal Antibody
Host	Rabbit
Application	IHC,ELISA
Reactivity	Human,Rat,Mouse

Performance

Conjugation	Unconjugated
Modification	Unmodified
Isotype	IgG
Clonality	Polyclonal
Form	Liquid
Storage	Store at 4°C short term. Aliquot and store at -20°C long term. Avoid freeze/thaw cycles.
Buffer	Liquid in PBS containing 50% glycerol, 0.5% BSA and 0.02% New type preservative N.
Purification	Affinity purification

Immunogen

Gene Name	PMS2/PMS2CL
Alternative Names	PMS2CL; Protein PMS2CL; PMS2-C terminal-like protein; PMS2; PMSL2; Mismatch repair endonuclease PMS2; DNA mismatch repair protein PMS2; PMS1 protein homolog 2
Gene ID	5395.0
SwissProt ID	Q68D20/P54278.The antiserum was produced against synthesized peptide derived from human PMS2CL. AA range:125-174

Application

Dilution Ratio	IHC 1:100-1:300 ELISA: 1:5000
Molecular Weight	

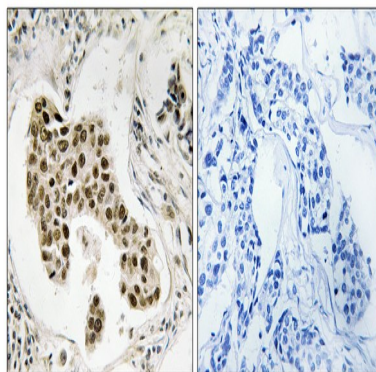
Product Name: PMS2/PMS2CL Rabbit Polyclonal Antibody
Catalog #: APRab16314

Background

caution:According to PubMed:15077197, it is a pseudogene. However, a peptide specific to this protein was identified by mass spectrometry (PubMed:17525332). Given that the product described by PubMed:15077197 is located downstream and on another frame of the transcript, it may explain why PubMed:15256438 could not detect this protein on a Western blot.,PTM:Phosphorylated upon DNA damage, probably by ATM or ATR.,sequence caution:Wrong choice of transcript.,similarity:Belongs to the DNA mismatch repair mutL/hexB family.,caution:According to PubMed:15077197, it is a pseudogene. However, a peptide specific to this protein was identified by mass spectrometry (PubMed:17525332). Given that the product described by PubMed:15077197 is located downstream and on another frame of the transcript, it may explain why PubMed:15256438 could not detect this protein on a Western blot.,PTM:Phosphorylated upon DNA damage, probably by ATM or ATR.,sequence caution:Wrong choice of transcript.,similarity:Belongs to the DNA mismatch repair mutL/hexB family.,

Research Area

Image Data



Immunohistochemistry analysis of paraffin-embedded human breast carcinoma, using PMS2/PMS2CL Antibody. The picture on the right is blocked with the synthesized peptide.

Note

For research use only.