

**Product Name: PML Rabbit Polyclonal Antibody**  
**Catalog #: APRab16306**



## Summary

<b>Production Name</b>	PML Rabbit Polyclonal Antibody
<b>Description</b>	Rabbit Polyclonal Antibody
<b>Host</b>	Rabbit
<b>Application</b>	IF,IHC,WB,ELISA
<b>Reactivity</b>	Human,Rat,Mouse

## Performance

<b>Conjugation</b>	Unconjugated
<b>Modification</b>	Unmodified
<b>Isotype</b>	IgG
<b>Clonality</b>	Polyclonal
<b>Form</b>	Liquid
<b>Storage</b>	Store at 4°C short term. Aliquot and store at -20°C long term. Avoid freeze/thaw cycles.
<b>Buffer</b>	Liquid in PBS containing 50% glycerol, 0.5% BSA and 0.02% New type preservative N.
<b>Purification</b>	Affinity purification

## Immunogen

<b>Gene Name</b>	PML
<b>Alternative Names</b>	PML; MYL; RNF71; TRIM19; Protein PML; Promyelocytic leukemia protein; RING finger protein 71; Tripartite motif-containing protein 19
<b>Gene ID</b>	5371.0
<b>SwissProt ID</b>	P29590.The antiserum was produced against synthesized peptide derived from human PML. AA range:11-60

## Application

<b>Dilution Ratio</b>	WB 1:500 - 1:2000. IHC 1:100 - 1:300. IF 1:200 - 1:1000. ELISA: 1:10000. Not yet tested in other applications.
<b>Molecular Weight</b>	98kD

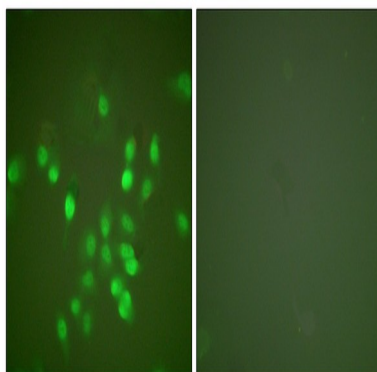
## Background

The protein encoded by this gene is a member of the tripartite motif (TRIM) family. The TRIM motif includes three zinc-binding domains, a RING, a B-box type 1 and a B-box type 2, and a coiled-coil region. This phosphoprotein localizes to nuclear bodies where it functions as a transcription factor and tumor suppressor. Its expression is cell-cycle related and it regulates the p53 response to oncogenic signals. The gene is often involved in the translocation with the retinoic acid receptor alpha gene associated with acute promyelocytic leukemia (APL). Extensive alternative splicing of this gene results in several variations of the protein's central and C-terminal regions; all variants encode the same N-terminus. Alternatively spliced transcript variants encoding different isoforms have been identified. [provided by RefSeq, Jul 2008], alternative products: Additional isoforms seem to exist, disease: A chromosomal aberration involving PML may be a cause of acute promyelocytic leukemia (APL). Translocation t(15;17)(q21;q21) with RARA. The PML breakpoints (type A and type B) lie on either side of an alternatively spliced exon., function: Probable transcription factor. May play an important role in recruitment of ELF4 into PML nuclear bodies., PTM: Sumoylated on all three sites is required for nuclear body formation. Sumoylation on Lys-160 is a prerequisite for sumoylation on Lys-65. The PML-RARA fusion protein is not sumoylated., PTM: Ubiquitinated; mediated by SIAH1 or SIAH2 and leading to its subsequent proteasomal degradation., similarity: Contains 1 RING-type zinc finger., similarity: Contains 2 B box-type zinc fingers., subcellular location: Sumoylated forms localize to the PML nuclear bodies. The B1 box and the RING finger are also required for this nuclear localization. Isoforms lacking a nuclear localization signal are cytoplasmic., subunit: Interacts with SIRT1, TOPBP1, TRIM27 and TRIM69. Interacts with the C-terminus of ELF4. Interacts with Lassa virus Z protein and rabies virus phosphoprotein.,

## Research Area

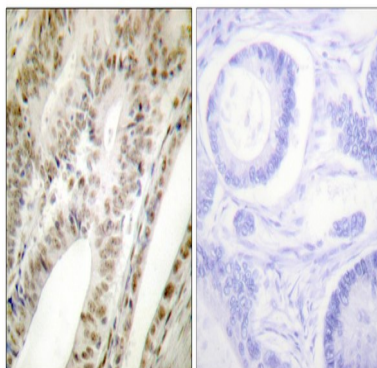
Ubiquitin mediated proteolysis; Pathways in cancer; Acute myeloid leukemia;

## Image Data

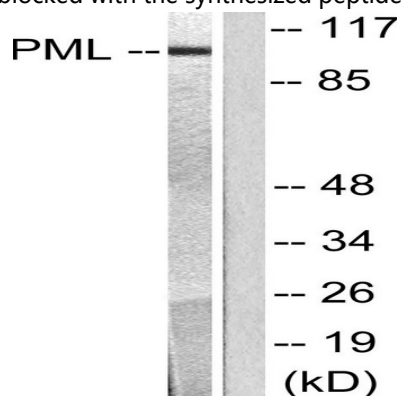


Immunofluorescence analysis of A549 cells, using PML Antibody. The picture on the right is blocked with the synthesized peptide.

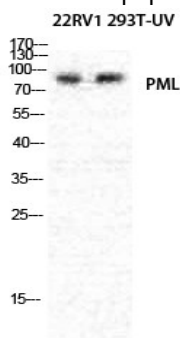
**Product Name: PML Rabbit Polyclonal Antibody**  
**Catalog #: APRab16306**



Immunohistochemistry analysis of paraffin-embedded human tonsil tissue, using PML Antibody. The picture on the right is blocked with the synthesized peptide.

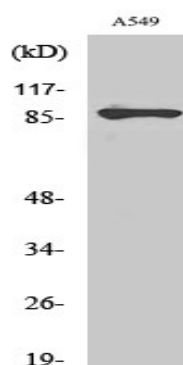


Western blot analysis of lysates from A549 cells, using PML Antibody. The lane on the right is blocked with the synthesized peptide.



Western Blot analysis of various cells using PML Polyclonal Antibody diluted at 1: 1000

**Product Name: PML Rabbit Polyclonal Antibody**  
**Catalog #: APRab16306**



Western Blot analysis of A549 cells using PML Polyclonal Antibody diluted at 1: 1000

### **Note**

For research use only.