

**Product Name: PLB Rabbit Polyclonal Antibody**  
**Catalog #: APRab16245**



## Summary

<b>Production Name</b>	PLB Rabbit Polyclonal Antibody
<b>Description</b>	Rabbit Polyclonal Antibody
<b>Host</b>	Rabbit
<b>Application</b>	IF,ELISA
<b>Reactivity</b>	Human,Mouse,Rat

## Performance

<b>Conjugation</b>	Unconjugated
<b>Modification</b>	Unmodified
<b>Isotype</b>	IgG
<b>Clonality</b>	Polyclonal
<b>Form</b>	Liquid
<b>Storage</b>	Store at 4°C short term. Aliquot and store at -20°C long term. Avoid freeze/thaw cycles.
<b>Buffer</b>	Liquid in PBS containing 50% glycerol, 0.5% BSA and 0.02% New type preservative N.
<b>Purification</b>	Affinity purification

## Immunogen

<b>Gene Name</b>	PLN
<b>Alternative Names</b>	PLN; PLB; Cardiac phospholamban; PLB
<b>Gene ID</b>	5350.0
<b>SwissProt ID</b>	P26678.The antiserum was produced against synthesized peptide derived from human PLB. AA range:1-50

## Application

<b>Dilution Ratio</b>	IF 1:200-1:1000
<b>Molecular Weight</b>	

## Background

The protein encoded by this gene is found as a pentamer and is a major substrate for the cAMP-dependent protein kinase

**Product Name: PLB Rabbit Polyclonal Antibody**  
**Catalog #: APRab16245**

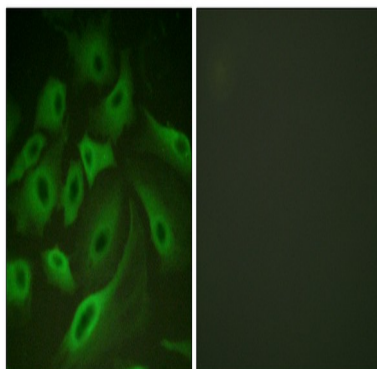


in cardiac muscle. The encoded protein is an inhibitor of cardiac muscle sarcoplasmic reticulum  $\text{Ca}(2+)$ -ATPase in the unphosphorylated state, but inhibition is relieved upon phosphorylation of the protein. The subsequent activation of the  $\text{Ca}(2+)$  pump leads to enhanced muscle relaxation rates, thereby contributing to the inotropic response elicited in heart by beta-agonists. The encoded protein is a key regulator of cardiac diastolic function. Mutations in this gene are a cause of inherited human dilated cardiomyopathy with refractory congestive heart failure, and also familial hypertrophic cardiomyopathy. [provided by RefSeq, Apr 2016],disease:Defects in PLN are the cause of cardiomyopathy dilated type 1P (CMD1P) [MIM:609909]. Dilated cardiomyopathy is a disorder characterized by ventricular dilation and impaired systolic function, resulting in congestive heart failure and arrhythmia. Patients are at risk of premature death.,function:Phospholamban has been postulated to regulate the activity of the calcium pump of cardiac sarcoplasmic reticulum.,PTM:Phosphorylated in response to beta-adrenergic stimulation.,similarity:Belongs to the phospholamban family.,subunit:Homopentamer.,tissue specificity:Heart.,

## Research Area

Calcium;Dilated cardiomyopathy;

## Image Data



Immunofluorescence analysis of HeLa cells, using PLB Antibody. The picture on the right is blocked with the synthesized peptide.

## Note

For research use only.