

Product Name: PKI β Rabbit Polyclonal Antibody
Catalog #: APRab16217



Summary

Production Name	PKI β Rabbit Polyclonal Antibody
Description	Rabbit Polyclonal Antibody
Host	Rabbit
Application	IF,ELISA
Reactivity	Human,Mouse,Rat

Performance

Conjugation	Unconjugated
Modification	Unmodified
Isotype	IgG
Clonality	Polyclonal
Form	Liquid
Storage	Store at 4°C short term. Aliquot and store at -20°C long term. Avoid freeze/thaw cycles.
Buffer	Liquid in PBS containing 50% glycerol, 0.5% BSA and 0.02% New type preservative N.
Purification	Affinity purification

Immunogen

Gene Name	PKIB
Alternative Names	PKIB; PRKACN2; cAMP-dependent protein kinase inhibitor beta; PKI-beta
Gene ID	5570.0
SwissProt ID	Q9C010.The antiserum was produced against synthesized peptide derived from human IPKB. AA range:29-78

Application

Dilution Ratio	IF 1:200-1:1000. ELISA: 1:5000
Molecular Weight	

Background

protein kinase (cAMP-dependent, catalytic) inhibitor beta(PKIB) Homo sapiens This gene encodes a member of the

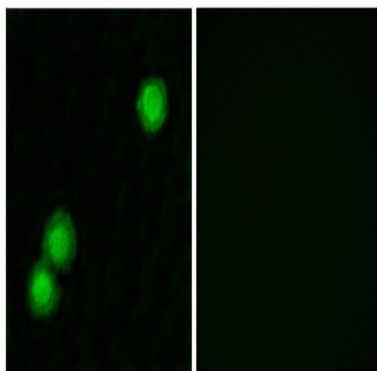
Product Name: PKI β Rabbit Polyclonal Antibody
Catalog #: APRab16217



cAMP-dependent protein kinase inhibitor family. The encoded protein may play a role in the protein kinase A (PKA) pathway by interacting with the catalytic subunit of PKA, and overexpression of this gene may play a role in prostate cancer. Alternatively spliced transcript variants encoding multiple isoforms have been observed for this gene. [provided by RefSeq, Jul 2012],function:Extremely potent competitive inhibitor of cAMP-dependent protein kinase activity, this protein interacts with the catalytic subunit of the enzyme after the cAMP-induced dissociation of its regulatory chains.,similarity:Belongs to the PKI family.,

Research Area

Image Data



Immunofluorescence analysis of MCF7 cells, using IPKB Antibody. The picture on the right is blocked with the synthesized peptide.

Note

For research use only.