

**Product Name: PKC  $\theta$  Rabbit Polyclonal Antibody**  
**Catalog #: APRab16205**



## Summary

<b>Production Name</b>	PKC $\theta$ Rabbit Polyclonal Antibody
<b>Description</b>	Rabbit Polyclonal Antibody
<b>Host</b>	Rabbit
<b>Application</b>	IHC, WB, ELISA
<b>Reactivity</b>	Human, Mouse, Rat

## Performance

<b>Conjugation</b>	Unconjugated
<b>Modification</b>	Unmodified
<b>Isotype</b>	IgG
<b>Clonality</b>	Polyclonal
<b>Form</b>	Liquid
<b>Storage</b>	Store at 4°C short term. Aliquot and store at -20°C long term. Avoid freeze/thaw cycles.
<b>Buffer</b>	Liquid in PBS containing 50% glycerol, 0.5% BSA and 0.02% New type preservative N.
<b>Purification</b>	Affinity purification

## Immunogen

<b>Gene Name</b>	PRKCQ
<b>Alternative Names</b>	PRKCQ; PRKCT; Protein kinase C theta type; nPKC-theta
<b>Gene ID</b>	5588.0
<b>SwissProt ID</b>	Q04759. The antiserum was produced against synthesized peptide derived from human PKC thet. AA range: 504-553

## Application

<b>Dilution Ratio</b>	WB 1:500 - 1:2000. IHC 1:100 - 1:300. ELISA: 1:20000..
<b>Molecular Weight</b>	78kD

## Background

**Product Name: PKC  $\theta$  Rabbit Polyclonal Antibody**  
**Catalog #: APRab16205**

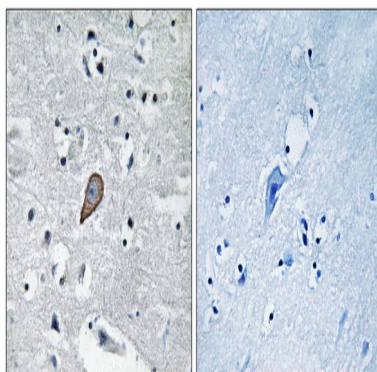


Protein kinase C (PKC) is a family of serine- and threonine-specific protein kinases that can be activated by calcium and the second messenger diacylglycerol. PKC family members phosphorylate a wide variety of protein targets and are known to be involved in diverse cellular signaling pathways. PKC family members also serve as major receptors for phorbol esters, a class of tumor promoters. Each member of the PKC family has a specific expression profile and is believed to play a distinct role. The protein encoded by this gene is one of the PKC family members. It is a calcium-independent and phospholipid-dependent protein kinase. This kinase is important for T-cell activation. It is required for the activation of the transcription factors NF-kappaB and AP-1, and may link the T cell receptor (TCR) signaling complex to the activation of the transcription factors. [provided by RefSeq, Jul 2008],catalytic activity:ATP + a protein = ADP + a phosphoprotein.,cofactor:Magnesium.,domain:The C1 domain, containing the phorbol ester/DAG-type region 1 (C1A) and 2 (C1B), is the diacylglycerol sensor and the C2 domain is a non-calcium binding domain.,enzyme regulation:Three specific sites; Thr-538 (activation loop of the kinase domain), Ser-676 (turn motif) and Ser-695 (hydrophobic region), need to be phosphorylated for its full activation.,function:PKC is activated by diacylglycerol which in turn phosphorylates a range of cellular proteins. PKC also serves as the receptor for phorbol esters, a class of tumor promoters.,function:This is a calcium-independent, phospholipid-dependent, serine- and threonine-specific enzyme. Essential for T-cell receptor (TCR)-mediated T-cell activation, but is dispensable during TCR-dependent thymocyte development. Links the TCR signaling complex to the activation of NF-kappa-B in mature T lymphocytes. Required for interleukin-2 (IL2) production.,PTM:Autophosphorylation at Thr-219 is required for targeting to the TCR and cellular function of PKC upon antigen receptor ligation.,similarity:Belongs to the protein kinase superfamily.,similarity:Belongs to the protein kinase superfamily. AGC Ser/Thr protein kinase family. PKC subfamily.,similarity:Contains 1 AGC-kinase C-terminal domain.,similarity:Contains 1 C2 domain.,similarity:Contains 1 protein kinase domain.,similarity:Contains 2 phorbol-ester/DAG-type zinc fingers.,subunit:Interacts with TXNL2/PICOT.,tissue specificity:Skeletal muscle, megakaryoblastic cells and platelets.,

## Research Area

Regulation\_Microtubule; Regulation of Actin Dynamics; Stem cell pathway; Insulin Receptor; NF\_kappaB; B Cell Receptor; AMPK

## Image Data

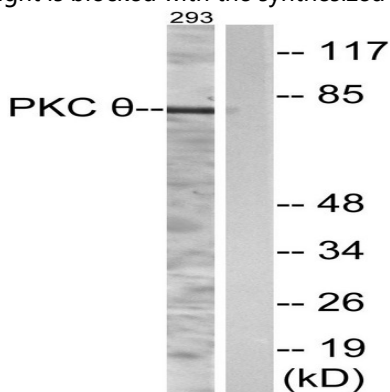


Immunohistochemistry analysis of paraffin-embedded human brain carcinoma tissue, using PKC  $\theta$  Antibody. The picture

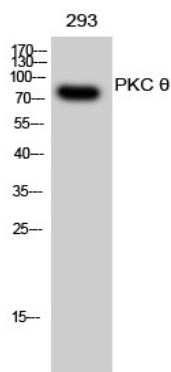
**Product Name: PKC  $\theta$  Rabbit Polyclonal Antibody**  
**Catalog #: APRab16205**



on the right is blocked with the synthesized peptide.



Western blot analysis of lysates from 293 cells, using PKC  $\theta$  Antibody. The lane on the right is blocked with the synthesized peptide.



Western Blot analysis of 293 cells using PKC  $\theta$  Polyclonal Antibody

## Note

For research use only.