

Product Name: PIXβ Rabbit Polyclonal Antibody
Catalog #: APRab16172



Summary

Production Name	PIXβ Rabbit Polyclonal Antibody
Description	Rabbit Polyclonal Antibody
Host	Rabbit
Application	WB
Reactivity	Human,Mouse,Rat

Performance

Conjugation	Unconjugated
Modification	Unmodified
Isotype	IgG
Clonality	Polyclonal
Form	Liquid
Storage	Store at 4°C short term. Aliquot and store at -20°C long term. Avoid freeze/thaw cycles.
Buffer	Liquid in PBS containing 50% glycerol, 0.5% BSA and 0.02% New type preservative N.
Purification	Affinity purification

Immunogen

Gene Name	ARHGEF7
Alternative Names	ARHGEF7; COOL1; KIAA0142; P85SPR; PAK3BP; PIXB; Nbla10314; Rho guanine nucleotide exchange factor 7; Beta-Pix; COOL-1; PAK-interacting exchange factor beta; p85
Gene ID	8874.0
SwissProt ID	Q14155.The antiserum was produced against synthesized peptide derived from human ARHGEF7. AA range:311-360

Application

Dilution Ratio	WB 1:500-1:2000. ELISA: 1:5000.
Molecular Weight	80kD

Product Name: PIXβ Rabbit Polyclonal Antibody
Catalog #: AP Rab16172



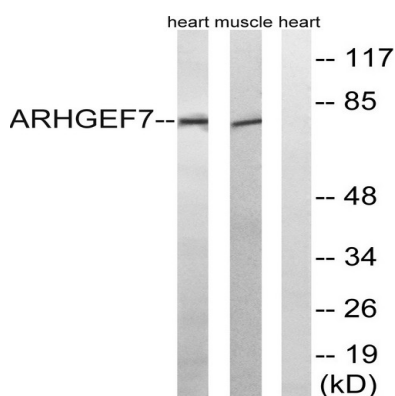
Background

This gene encodes a protein that belongs to a family of cytoplasmic proteins that activate the Ras-like family of Rho proteins by exchanging bound GDP for GTP. It forms a complex with the small GTP binding protein Rac1 and recruits Rac1 to membrane ruffles and to focal adhesions. Multiple alternatively spliced transcript variants encoding different isoforms have been observed for this gene. [provided by RefSeq, Mar 2016],function:Acts as a RAC1 guanine nucleotide exchange factor (GEF) and can induce membrane ruffling.,similarity:Contains 1 CH (calponin-homology) domain.,similarity:Contains 1 DH (DBL-homology) domain.,similarity:Contains 1 PH domain.,similarity:Contains 1 SH3 domain.,subunit:Interacts with PAK kinases through the SH3 domain. Interacts with GIT1 and TGFB111. Interacts with ITCH (By similarity). Interacts with unphosphorylated PAK1.,

Research Area

Regulation of Actin Dynamics; AMPK

Image Data



Western blot analysis of lysates from rat muscle and rat heart cells, using ARHGEF7 Antibody. The lane on the right is blocked with the synthesized peptide.

Note

For research use only.