

Product Name: Pim-1 Rabbit Polyclonal Antibody
Catalog #: APRab16149



Summary

Production Name	Pim-1 Rabbit Polyclonal Antibody
Description	Rabbit Polyclonal Antibody
Host	Rabbit
Application	WB
Reactivity	Human,Mouse,Rat

Performance

Conjugation	Unconjugated
Modification	Unmodified
Isotype	IgG
Clonality	Polyclonal
Form	Liquid
Storage	Store at 4°C short term. Aliquot and store at -20°C long term. Avoid freeze/thaw cycles.
Buffer	Liquid in PBS containing 50% glycerol, 0.5% BSA and 0.02% New type preservative N.
Purification	Affinity purification

Immunogen

Gene Name	PIM1
Alternative Names	PIM1; Serine/threonine-protein kinase pim-1
Gene ID	5292.0
SwissProt ID	P11309.The antiserum was produced against synthesized peptide derived from human Pim-1. AA range:281-330

Application

Dilution Ratio	WB 1:500-2000
Molecular Weight	50kD

Background

The protein encoded by this gene belongs to the Ser/Thr protein kinase family, and PIM subfamily. This gene is expressed

Product Name: Pim-1 Rabbit Polyclonal Antibody
Catalog #: AP Rab16149

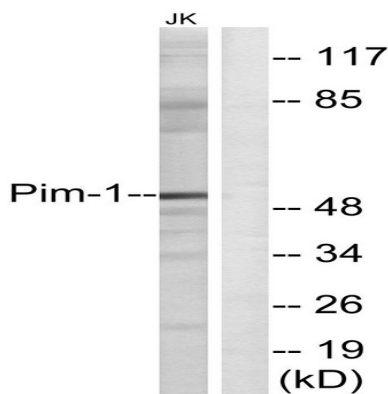


primarily in B-lymphoid and myeloid cell lines, and is overexpressed in hematopoietic malignancies and in prostate cancer. It plays a role in signal transduction in blood cells, contributing to both cell proliferation and survival, and thus provides a selective advantage in tumorigenesis. Both the human and orthologous mouse genes have been reported to encode two isoforms (with preferential cellular localization) resulting from the use of alternative in-frame translation initiation codons, the upstream non-AUG (CUG) and downstream AUG codons (PMIDs:16186805, 1825810).[provided by RefSeq, Aug 2011],catalytic activity:ATP + a protein = ADP + a phosphoprotein.,cofactor:Manganese.,function:Plays a role in signal transduction in blood cells. Contributes to both cell proliferation and survival and thus provide a selective advantage in tumorigenesis. May affect the structure or silencing of chromatin by phosphorylating HP1 gamma/CBX3.,induction:Strongly induced in leukocytes by the JAK/STAT pathway in response to cytokines.,PTM:Autophosphorylated on both serine/threonine and tyrosine residues.,similarity:Belongs to the protein kinase superfamily. CAMK Ser/Thr protein kinase family. PIM subfamily.,similarity:Contains 1 protein kinase domain.,subunit:Binds to RP9. Isoform 2 is isolated as a monomer whereas isoform 1 complexes with other proteins. Isoform 1, but not isoform 2, binds BMX.,tissue specificity:Expressed primarily in cells of the hematopoietic and germline lineages. Isoform 1 and isoform 2 are both expressed in prostate cancer cell lines.,

Research Area

Jak_STAT;Acute myeloid leukemia;

Image Data



Western blot analysis of lysates from Jurkat cells, using Pim-1 Antibody. The lane on the right is blocked with the synthesized peptide.

Note

For research use only.