

**Product Name: PHACTR4 Rabbit Polyclonal Antibody**  
**Catalog #: APRab16053**



## Summary

<b>Production Name</b>	PHACTR4 Rabbit Polyclonal Antibody
<b>Description</b>	Rabbit Polyclonal Antibody
<b>Host</b>	Rabbit
<b>Application</b>	WB,ELISA
<b>Reactivity</b>	Human,Rat,Mouse

## Performance

<b>Conjugation</b>	Unconjugated
<b>Modification</b>	Unmodified
<b>Isotype</b>	IgG
<b>Clonality</b>	Polyclonal
<b>Form</b>	Liquid
<b>Storage</b>	Store at 4°C short term. Aliquot and store at -20°C long term. Avoid freeze/thaw cycles.
<b>Buffer</b>	Liquid in PBS containing 50% glycerol, 0.5% BSA and 0.02% New type preservative N.
<b>Purification</b>	Affinity purification

## Immunogen

<b>Gene Name</b>	PHACTR4
<b>Alternative Names</b>	PHACTR4; Phosphatase and actin regulator 4
<b>Gene ID</b>	65979.0
<b>SwissProt ID</b>	Q8IZ21.The antiserum was produced against synthesized peptide derived from human PHACTR4. AA range:363-412

## Application

<b>Dilution Ratio</b>	WB 1:500-2000 ELISA 2000-20000
<b>Molecular Weight</b>	80kD

## Background

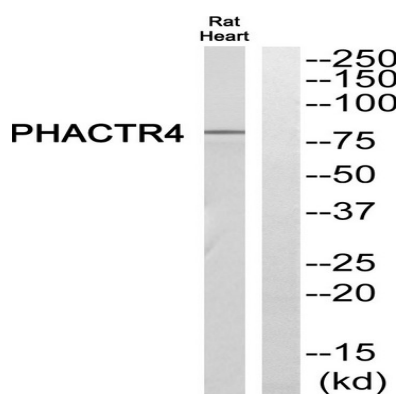
**Product Name: PHACTR4 Rabbit Polyclonal Antibody**  
**Catalog #: AP Rab16053**



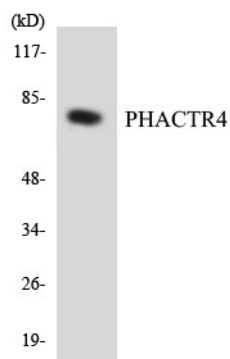
This gene encodes a member of the phosphatase and actin regulator (PHACTR) family. Other PHACTR family members have been shown to inhibit protein phosphatase 1 (PP1) activity, and the homolog of this gene in the mouse has been shown to interact with actin and PP1. Multiple transcript variants encoding different isoforms have been found for this gene. [provided by RefSeq, Jul 2008],PTM:Phosphorylated upon DNA damage, probably by ATM or ATR.,similarity:Belongs to the phosphatase and actin regulator family.,similarity:Contains 3 RPEL repeats.,subunit:Binds PPP1CA and actin.,

## Research Area

## Image Data



Western blot analysis of PHACTR4 Antibody. The lane on the right is blocked with the PHACTR4 peptide.



Western blot analysis of the lysates from HeLa cells using PHACTR4 antibody.

## Note

For research use only.