

Product Name: PGLS Rabbit Polyclonal Antibody
Catalog #: APRab16036



Summary

Production Name	PGLS Rabbit Polyclonal Antibody
Description	Rabbit Polyclonal Antibody
Host	Rabbit
Application	IHC, WB, ELISA
Reactivity	Human, Rat, Mouse

Performance

Conjugation	Unconjugated
Modification	Unmodified
Isotype	IgG
Clonality	Polyclonal
Form	Liquid
Storage	Store at 4°C short term. Aliquot and store at -20°C long term. Avoid freeze/thaw cycles.
Buffer	Liquid in PBS containing 50% glycerol, 0.5% BSA and 0.02% New type preservative N.
Purification	Affinity purification

Immunogen

Gene Name	PGLS
Alternative Names	PGLS; 6-phosphogluconolactonase; 6PGL
Gene ID	25796.0
SwissProt ID	O95336. The antiserum was produced against synthesized peptide derived from human PGLS. AA range: 191-240

Application

Dilution Ratio	WB 1:500 - 1:2000. IHC 1:100 - 1:300. ELISA: 1:40000..
Molecular Weight	30kD

Background

Product Name: PGLS Rabbit Polyclonal Antibody
Catalog #: APRab16036

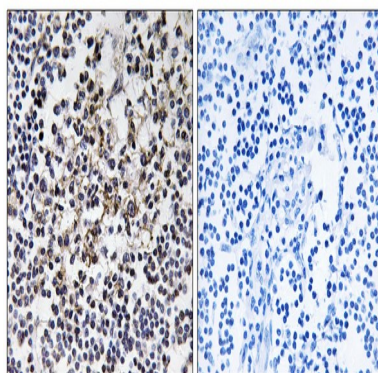


catalytic activity:6-phospho-D-glucono-1,5-lactone + H(2)O = 6-phospho-D-gluconate.,function:Hydrolysis of 6-phosphogluconolactone to 6-phosphogluconate.,pathway:Carbohydrate degradation; pentose phosphate pathway; D-ribulose 5-phosphate from D-glucose 6-phosphate (oxidative stage): step 2/3.,similarity:Belongs to the glucosamine/galactosamine-6-phosphate isomerase family. 6-phosphogluconolactonase subfamily.,catalytic activity:6-phospho-D-glucono-1,5-lactone + H(2)O = 6-phospho-D-gluconate.,function:Hydrolysis of 6-phosphogluconolactone to 6-phosphogluconate.,pathway:Carbohydrate degradation; pentose phosphate pathway; D-ribulose 5-phosphate from D-glucose 6-phosphate (oxidative stage): step 2/3.,similarity:Belongs to the glucosamine/galactosamine-6-phosphate isomerase family. 6-phosphogluconolactonase subfamily.,

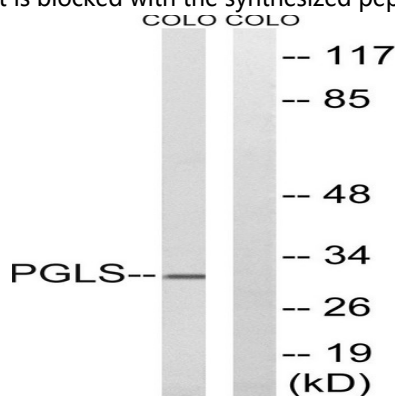
Research Area

Pentose phosphate pathway;

Image Data

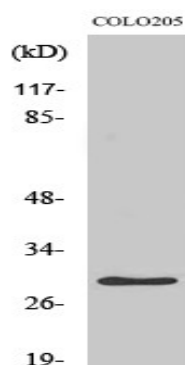


Immunohistochemistry analysis of paraffin-embedded human lymph node tissue, using PGLS Antibody. The picture on the right is blocked with the synthesized peptide.



Western blot analysis of lysates from COLO cells, using PGLS Antibody. The lane on the right is blocked with the synthesized peptide.

Product Name: PGLS Rabbit Polyclonal Antibody
Catalog #: APRab16036



Western Blot analysis of various cells using PGLS Polyclonal Antibody

Note

For research use only.