

Summary

Production Name	Pepsin A Rabbit Polyclonal Antibody
Description	Rabbit Polyclonal Antibody
Host	Rabbit
Application	IHC, WB, ELISA
Reactivity	Human, Rat, Mouse

Performance

Conjugation	Unconjugated
Modification	Unmodified
Isotype	IgG
Clonality	Polyclonal
Form	Liquid
Storage	Store at 4°C short term. Aliquot and store at -20°C long term. Avoid freeze/thaw cycles.
Buffer	Liquid in PBS containing 50% glycerol, 0.5% BSA and 0.02% New type preservative N.
Purification	Affinity purification

Immunogen

Gene Name	PGA3/PGA4/PGA5
Alternative Names	Pepsin A; PGA3; PGA4; PGA5
Gene ID	5222/643847
SwissProt ID	P00790. The antiserum was produced against synthesized peptide derived from human Pepsin A. AA range: 258-307

Application

Dilution Ratio	WB 1:500 - 1:2000. IHC 1:100 - 1:300. ELISA: 1:10000..
Molecular Weight	42kD

Background

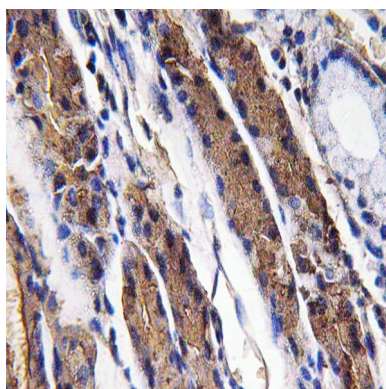
Product Name: Pepsin A Rabbit Polyclonal Antibody
Catalog #: APRab15964



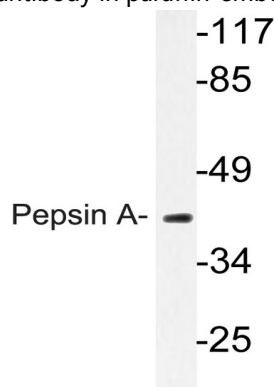
This gene encodes a protein precursor of the digestive enzyme pepsin, a member of the peptidase A1 family of endopeptidases. The encoded precursor is secreted by gastric chief cells and undergoes autocatalytic cleavage in acidic conditions to form the active enzyme, which functions in the digestion of dietary proteins. This gene is found in a cluster of related genes on chromosome 11, each of which encodes one of multiple pepsinogens. Pepsinogen levels in serum may serve as a biomarker for atrophic gastritis and gastric cancer. [provided by RefSeq, Jul 2015], catalytic activity: Preferential cleavage: hydrophobic, preferably aromatic, residues in P1 and P1' positions. Cleaves 1-Phe-|-Val-2, 4-Gln-|-His-5, 13-Glu-|-Ala-14, 14-Ala-|-Leu-15, 15-Leu-|-Tyr-16, 16-Tyr-|-Leu-17, 23-Gly-|-Phe-24, 24-Phe-|-Phe-25 and 25-Phe-|-Tyr-26 bonds in the B chain of insulin., function: Shows particularly broad specificity; although bonds involving phenylalanine and leucine are preferred, many others are also cleaved to some extent., similarity: Belongs to the peptidase A1 family.,

Research Area

Image Data

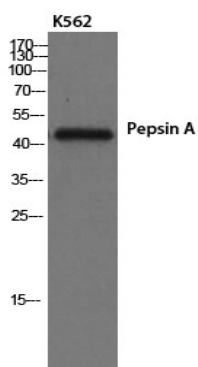


Immunohistochemistry analysis of Pepsin A antibody in paraffin-embedded human lung carcinoma tissue.



Western blot analysis of lysate from K562 cells, using Pepsin A antibody.

Product Name: Pepsin A Rabbit Polyclonal Antibody
Catalog #: APRab15964



Western Blot analysis of K562 cells using Pepsin A Polyclonal Antibody

Note

For research use only.