

Summary

Production Name	PEBP2 β Rabbit Polyclonal Antibody
Description	Rabbit Polyclonal Antibody
Host	Rabbit
Application	IHC, WB, ELISA
Reactivity	Human, Mouse, Rat

Performance

Conjugation	Unconjugated
Modification	Unmodified
Isotype	IgG
Clonality	Polyclonal
Form	Liquid
Storage	Store at 4°C short term. Aliquot and store at -20°C long term. Avoid freeze/thaw cycles.
Buffer	Liquid in PBS containing 50% glycerol, 0.5% BSA and 0.02% New type preservative N.
Purification	Affinity purification

Immunogen

Gene Name	CBFB
Alternative Names	CBFB; Core-binding factor subunit beta; CBF-beta; Polyomavirus enhancer-binding protein 2 beta subunit; PEA2-beta; PEBP2-beta; SL3-3 enhancer factor 1 subunit beta; SL3/AKV core-binding factor beta subunit
Gene ID	865.0
SwissProt ID	Q13951. The antiserum was produced against synthesized peptide derived from human CBF beta. AA range: 11-60

Application

Dilution Ratio	WB 1:500 - 1:2000. IHC 1:100 - 1:300. . ELISA: 1:20000. Not yet tested in other applications.
-----------------------	---

Product Name: PEBP2 β Rabbit Polyclonal Antibody
Catalog #: AP Rab15949



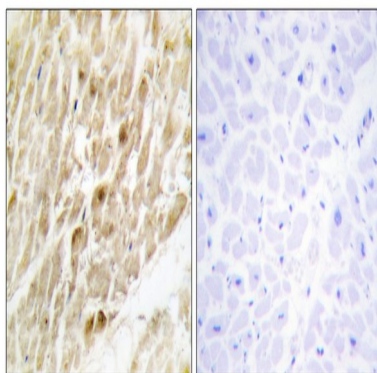
Molecular Weight 22kD

Background

The protein encoded by this gene is the beta subunit of a heterodimeric core-binding transcription factor belonging to the PEBP2/CBF transcription factor family which master-regulates a host of genes specific to hematopoiesis (e.g., RUNX1) and osteogenesis (e.g., RUNX2). The beta subunit is a non-DNA binding regulatory subunit; it allosterically enhances DNA binding by alpha subunit as the complex binds to the core site of various enhancers and promoters, including murine leukemia virus, polyomavirus enhancer, T-cell receptor enhancers and GM-CSF promoters. Alternative splicing generates two mRNA variants, each encoding a distinct carboxyl terminus. In some cases, a pericentric inversion of chromosome 16 [inv(16)(p13q22)] produces a chimeric transcript consisting of the N terminus of core-binding factor beta in a fusion with the C-terminal portion of the smooth muscle myosin heavy chain 11. disease: A chromosomal aberration involving CBF β is associated with acute myeloid leukemia of M4EO subtype. Pericentric inversion inv(16)(p13;q22). The inversion produces a fusion protein that consists of the 165 N-terminal residues of CBF-beta (PEPB2) with the tail region of MYH11. function: CBF binds to the core site, 5'-PYGPYGGT-3', of a number of enhancers and promoters, including murine leukemia virus, polyomavirus enhancer, T-cell receptor enhancers, LCK, IL-3 and GM-CSF promoters. CBF β enhances DNA binding by RUNX1. similarity: Belongs to the CBF-beta family. subunit: Heterodimer with RUNX1.

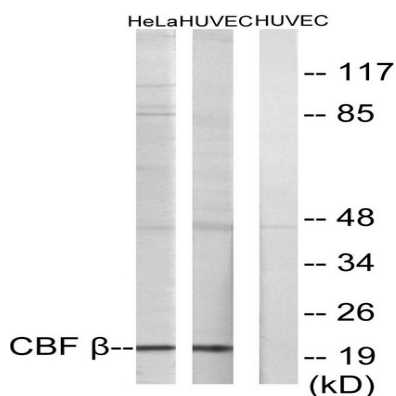
Research Area

Image Data



Immunohistochemistry analysis of paraffin-embedded human heart tissue, using CBF beta Antibody. The picture on the right is blocked with the synthesized peptide.

Product Name: PEBP2 β Rabbit Polyclonal Antibody
Catalog #: APRab15949



Western blot analysis of lysates from HUVEC and HeLa cells, using CBF beta Antibody. The lane on the right is blocked with the synthesized peptide.



Western Blot analysis of various cells using PEBP2 β Polyclonal Antibody cells nucleus extracted by Minute TM Cytoplasmic and Nuclear Fractionation kit (SC-003, Invent biotech, MN, USA) .

Note

For research use only.