

Product Name: PDE6G Rabbit Polyclonal Antibody
Catalog #: AP Rab15896



Summary

Production Name	PDE6G Rabbit Polyclonal Antibody
Description	Rabbit Polyclonal Antibody
Host	Rabbit
Application	WB,ELISA
Reactivity	Human,Mouse

Performance

Conjugation	Unconjugated
Modification	Unmodified
Isotype	IgG
Clonality	Polyclonal
Form	Liquid
Storage	Store at 4°C short term. Aliquot and store at -20°C long term. Avoid freeze/thaw cycles.
Buffer	Liquid in PBS containing 50% glycerol, 0.5% BSA and 0.02% New type preservative N.
Purification	Affinity purification

Immunogen

Gene Name	PDE6G PDEG
Alternative Names	Retinal rod rhodopsin-sensitive cGMP 3',5'-cyclic phosphodiesterase subunit gamma (GMP-PDE gamma;EC 3.1.4.35)
Gene ID	5148.0
SwissProt ID	P18545.Synthesized peptide derived from human PDE6G AA range: 10-90

Application

Dilution Ratio	IHC 1:50-200 ELISA(peptide)1:5000-20000
Molecular Weight	

Background

This gene encodes the gamma subunit of cyclic GMP-phosphodiesterase, which is composed of alpha- and beta- catalytic

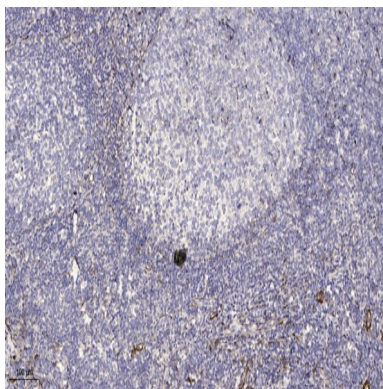
Product Name: PDE6G Rabbit Polyclonal Antibody
Catalog #: AP Rab15896



subunits and two identical, inhibitory gamma subunits. This gene is expressed in rod photoreceptors and functions in the phototransduction signaling cascade. It is also expressed in a variety of other tissues, and has been shown to regulate the c-Src protein kinase and G-protein-coupled receptor kinase 2. Alternative splicing results in multiple transcript variants. [provided by RefSeq, Feb 2009], catalytic activity: Guanosine 3',5'-cyclic phosphate + H₂O = guanosine 5'-phosphate, function: Participates in processes of transmission and amplification of the visual signal. cGMP-PDEs are the effector molecules in G-protein-mediated phototransduction in vertebrate rods and cones, online information: Retina International's Scientific Newsletter, similarity: Belongs to the rod/cone cGMP-PDE gamma subunit family, subunit: Oligomer composed of two catalytic chains (alpha and beta), an inhibitory chain (gamma) and the delta chain,

Research Area

Image Data



Immunohistochemical analysis of paraffin-embedded human tonsil. 1, Antibody was diluted at 1:200 (4° overnight) . 2, Tris-EDTA, pH 9.0 was used for antigen retrieval. 3, Secondary antibody was diluted at 1:200 (room temperature, 30min) .

Note

For research use only.