

**Product Name: PDE2A Rabbit Polyclonal Antibody**  
**Catalog #: APRab15887**



## Summary

<b>Production Name</b>	PDE2A Rabbit Polyclonal Antibody
<b>Description</b>	Rabbit Polyclonal Antibody
<b>Host</b>	Rabbit
<b>Application</b>	WB
<b>Reactivity</b>	Human,Mouse,Rat

## Performance

<b>Conjugation</b>	Unconjugated
<b>Modification</b>	Unmodified
<b>Isotype</b>	IgG
<b>Clonality</b>	Polyclonal
<b>Form</b>	Liquid
<b>Storage</b>	Store at 4°C short term. Aliquot and store at -20°C long term. Avoid freeze/thaw cycles.
<b>Buffer</b>	Liquid in PBS containing 50% glycerol, and 0.02% New type preservative N.
<b>Purification</b>	Affinity purification

## Immunogen

<b>Gene Name</b>	PDE2A
<b>Alternative Names</b>	
<b>Gene ID</b>	5138.0
<b>SwissProt ID</b>	O00408.Synthesized peptide derived from part region of human protein

## Application

<b>Dilution Ratio</b>	WB 1:500-2000 ELISA 1:5000-20000
<b>Molecular Weight</b>	103kD

## Background

alternative products:Additional isoforms seem to exist. Experimental confirmation may be lacking for some isoforms,catalytic activity:Nucleoside 3',5'-cyclic phosphate + H(2)O = nucleoside 5'-phosphate.,function:Hydrolyzes both

**Product Name: PDE2A Rabbit Polyclonal Antibody**  
**Catalog #: APRab15887**

---

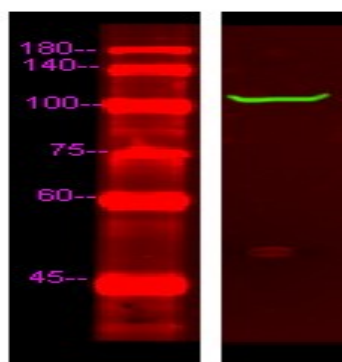


cyclic AMP (cAMP) and cyclic GMP (cGMP).,similarity:Belongs to the cyclic nucleotide phosphodiesterase family.,similarity:Contains 2 GAF domains.,subunit:Homodimer.,tissue specificity:Expressed in brain and to a lesser extent in heart, placenta, lung, skeletal muscle, kidney and pancreas.,alternative products:Additional isoforms seem to exist. Experimental confirmation may be lacking for some isoforms,catalytic activity:Nucleoside 3',5'-cyclic phosphate + H(2)O = nucleoside 5'-phosphate.,function:Hydrolyzes both cyclic AMP (cAMP) and cyclic GMP (cGMP).,similarity:Belongs to the cyclic nucleotide phosphodiesterase family.,similarity:Contains 2 GAF domains.,subunit:Homodimer.,tissue specificity:Expressed in brain and to a lesser extent in heart, placenta, lung, skeletal muscle, kidney and pancreas.,

## Research Area

Purine metabolism;

## Image Data



Western Blot analysis of Hela lysis, using primary antibody at 1:1000 dilution. Secondary antibody was diluted at 1:10000

## Note

For research use only.