

## Summary

<b>Production Name</b>	Pdcd-4 Rabbit Polyclonal Antibody
<b>Description</b>	Rabbit Polyclonal Antibody
<b>Host</b>	Rabbit
<b>Application</b>	IF, WB, IHC
<b>Reactivity</b>	Human, Mouse, Rat

## Performance

<b>Conjugation</b>	Unconjugated
<b>Modification</b>	Unmodified
<b>Isotype</b>	IgG
<b>Clonality</b>	Polyclonal
<b>Form</b>	Liquid
<b>Storage</b>	Store at 4°C short term. Aliquot and store at -20°C long term. Avoid freeze/thaw cycles.
<b>Buffer</b>	Liquid in PBS containing 50% glycerol, 0.5% BSA and 0.02% New type preservative N.
<b>Purification</b>	Affinity purification

## Immunogen

<b>Gene Name</b>	PDCD4
<b>Alternative Names</b>	PDCD4; H731; Programmed cell death protein 4; Neoplastic transformation inhibitor protein; Nuclear antigen H731-like; Protein 197/15a
<b>Gene ID</b>	27250.0
<b>SwissProt ID</b>	Q53EL6. The antiserum was produced against synthesized peptide derived from human PDCD4. AA range: 420-469

## Application

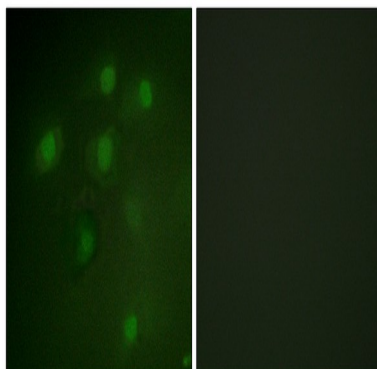
<b>Dilution Ratio</b>	WB 1:500 - 1:2000. IHC 1:100 - 1:300. IF 1:200 - 1:1000. ELISA: 1:20000. Not yet tested in other applications.
<b>Molecular Weight</b>	51kD

## Background

This gene is a tumor suppressor and encodes a protein that binds to the eukaryotic translation initiation factor 4A1 and inhibits its function by preventing RNA binding. Alternative splicing results in multiple transcript variants. [provided by RefSeq, Dec 2010],caution:The sequence shown here is derived from an Ensembl automatic analysis pipeline and should be considered as preliminary data.,disease:Loss of expression correlated with tumor progression of lung and colon carcinoma.,domain:Binds EIF4A1 via the MA3 domains.,function:Tumor suppressor. Inhibits tumor promoter-induced neoplastic transformation. Down-regulates the expression of MAP4K1, thus inhibiting events important in driving invasion, namely, MAPK85 activation and consequent JUN-dependent transcription. May play a role in apoptosis. Inhibits the helicase activity of EIF4A and cap-dependent translation. Binds RNA.,induction:IL2 stimulation inhibits expression, while IL12 increases expression.,sequence caution:Contaminating sequence. Potential poly-A sequence.,similarity:Belongs to the PD4 family.,similarity:Contains 2 MI domains.,subcellular location:Shuttles between the nucleus and cytoplasm. Predominantly nuclear under normal growth conditions. Exported from the nucleus in the absence of serum.,subunit:Interacts with EIF4A1 and EIF4A2.,tissue specificity:Up-regulated in proliferative cells. Highly expressed in epithelial cells of the mammary gland.,

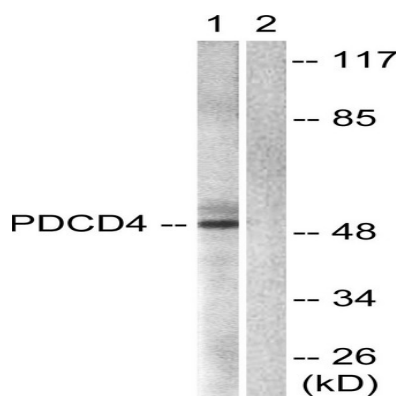
## Research Area

## Image Data

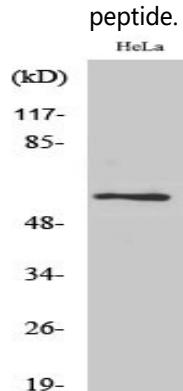


Immunofluorescence analysis of HeLa cells, using PDCD4 Antibody. The picture on the right is blocked with the synthesized peptide.

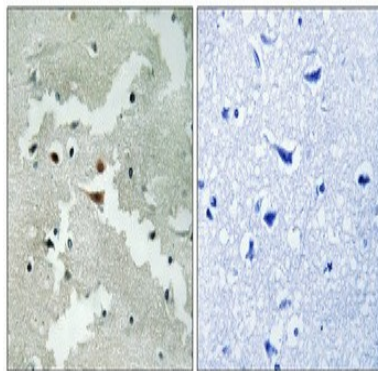
**Product Name: Pdcd-4 Rabbit Polyclonal Antibody**  
**Catalog #: APRab15879**



Western blot analysis of lysates from 293 cells, using PDCD4 Antibody. The lane on the right is blocked with the synthesized peptide.



Western Blot analysis of various cells using Pdcd-4 Polyclonal Antibody



Immunohistochemical analysis of paraffin-embedded Human brain. Antibody was diluted at 1:100 (4°, overnight) . High-pressure and temperature Tris-EDTA, pH 8.0 was used for antigen retrieval. Negative control (right) obtained from antibody was pre-absorbed by immunogen peptide.

## Note

For research use only.