

Product Name: PAR1 (Cleaved-Ser42) Rabbit Polyclonal Antibody
Catalog #: APRab15736

Summary

Production Name	PAR1 (Cleaved-Ser42) Rabbit Polyclonal Antibody
Description	Rabbit Polyclonal Antibody
Host	Rabbit
Application	WB
Reactivity	Human,Mouse,Rat

Performance

Conjugation	Unconjugated
Modification	Unmodified
Isotype	IgG
Clonality	Polyclonal
Form	Liquid
Storage	Store at 4°C short term. Aliquot and store at -20°C long term. Avoid freeze/thaw cycles.
Buffer	Liquid in PBS containing 50% glycerol, 0.5% BSA and 0.02% New type preservative N.
Purification	Affinity purification

Immunogen

Gene Name	F2R CF2R PAR1 TR
Alternative Names	Proteinase-activated receptor 1 (PAR-1) (Coagulation factor II receptor) (Thrombin receptor)
Gene ID	2149.0
SwissProt ID	P25116.Synthesized peptide derived from human PAR1 (Cleaved-Ser42) Polyclonal

Application

Dilution Ratio	WB 1:500-2000, ELISA 1:10000-20000
Molecular Weight	46kD

Background

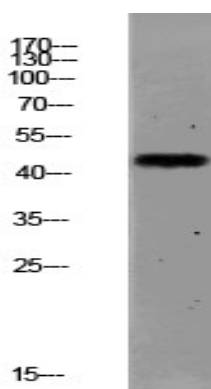
Product Name: PAR1 (Cleaved-Ser42) Rabbit Polyclonal Antibody
Catalog #: AP Rab15736

Coagulation factor II receptor is a 7-transmembrane receptor involved in the regulation of thrombotic response. Proteolytic cleavage leads to the activation of the receptor. F2R is a G-protein coupled receptor family member. Alternative splicing results in multiple transcript variants. [provided by RefSeq, Aug 2015],function:High affinity receptor for activated thrombin coupled to G proteins that stimulate phosphoinositide hydrolysis. May play a role in platelets activation and in vascular development.,PTM:A proteolytic cleavage generates a new N-terminus that functions as a tethered ligand.,PTM:Phosphorylated; probably mediating desensitization prior to the uncoupling and internalization of the receptor.,similarity:Belongs to the G-protein coupled receptor 1 family.,tissue specificity:Platelets and vascular endothelial cells.,

Research Area

Calcium;Neuroactive ligand-receptor interaction;Endocytosis;Complement and coagulation cascades;Regulates Actin and Cytoskeleton;

Image Data



Western blot analysis of MCF-7 lysate, antibody was diluted at 1000. Secondary antibody was diluted at 1:20000

Note

For research use only.