

**Product Name: PAI-3 Rabbit Polyclonal Antibody**  
**Catalog #: APRab15702**



## Summary

<b>Production Name</b>	PAI-3 Rabbit Polyclonal Antibody
<b>Description</b>	Rabbit Polyclonal Antibody
<b>Host</b>	Rabbit
<b>Application</b>	WB,IHC
<b>Reactivity</b>	Human,Rat,Mouse

## Performance

<b>Conjugation</b>	Unconjugated
<b>Modification</b>	Unmodified
<b>Isotype</b>	IgG
<b>Clonality</b>	Polyclonal
<b>Form</b>	Liquid
<b>Storage</b>	Store at 4°C short term. Aliquot and store at -20°C long term. Avoid freeze/thaw cycles.
<b>Buffer</b>	Liquid in PBS containing 50% glycerol, 0.5% BSA and 0.02% New type preservative N.
<b>Purification</b>	Affinity purification

## Immunogen

<b>Gene Name</b>	SERPINA5
<b>Alternative Names</b>	SERPINA5; PCI; PLANH3; Plasma serine protease inhibitor; Acrosomal serine protease inhibitor; Plasminogen activator inhibitor 3; PAI-3; PAI3; Protein C inhibitor; PCI; Serpin A5
<b>Gene ID</b>	155698.0
<b>SwissProt ID</b>	P05154.The antiserum was produced against synthesized peptide derived from human Serpin A5. AA range:260-309

## Application

<b>Dilution Ratio</b>	WB 1:500 - 1:2000. IHC 1:100 - 1:300. ELISA: 1:20000..
<b>Molecular Weight</b>	42kD

**Product Name: PAI-3 Rabbit Polyclonal Antibody**  
**Catalog #: APRab15702**



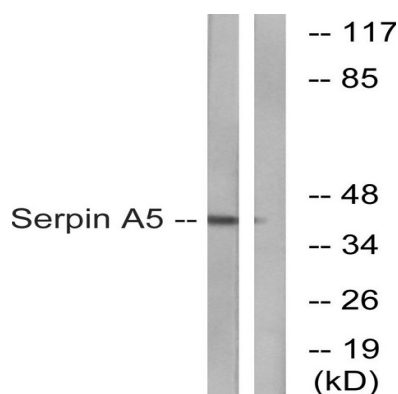
## Background

The protein encoded by this gene is a member of the serpin family of proteins, a group of proteins that inhibit serine proteases. This gene is one in a cluster of serpin genes located on the q arm of chromosome 14. This family member is a glycoprotein that can inhibit several serine proteases, including protein C and various plasminogen activators and kallikreins, and it thus plays diverse roles in hemostasis and thrombosis in multiple organs. [provided by RefSeq, Aug 2012],function:Inhibits activated protein C as well as plasminogen activators.,similarity:Belongs to the serpin family.,tissue specificity:Expressed by the liver and secreted in plasma.,

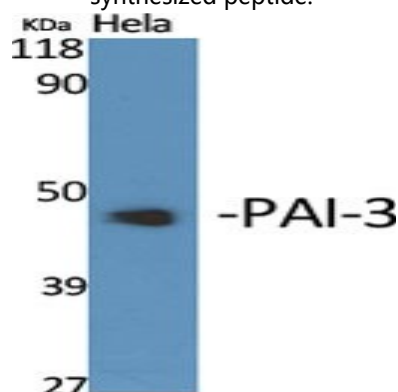
## Research Area

Complement and coagulation cascades;

## Image Data

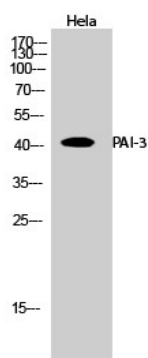


Western blot analysis of lysates from Jurkat cells, using Serpin A5 Antibody. The lane on the right is blocked with the synthesized peptide.

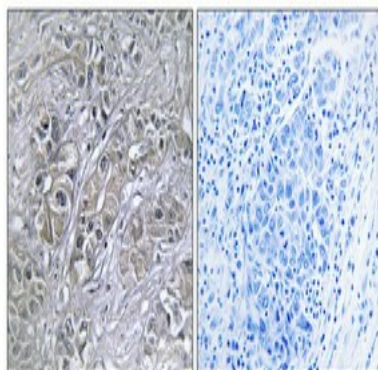


Western Blot analysis of various cells using PAI-3 Polyclonal Antibody

**Product Name: PAI-3 Rabbit Polyclonal Antibody**  
**Catalog #: APRab15702**



Western Blot analysis of HeLa cells using PAI-3 Polyclonal Antibody



Immunohistochemical analysis of paraffin-embedded Human lung cancer. Antibody was diluted at 1:100 (4°, overnight) . High-pressure and temperature Tris-EDTA, pH 8.0 was used for antigen retrieval. Negative control (right) obtained from antibody was pre-absorbed by immunogen peptide.

## Note

For research use only.