

Product Name: P2RY8 Rabbit Polyclonal Antibody
Catalog #: APRab15604



Summary

Production Name	P2RY8 Rabbit Polyclonal Antibody
Description	Rabbit Polyclonal Antibody
Host	Rabbit
Application	WB,ELISA
Reactivity	Human,Rat,Mouse

Performance

Conjugation	Unconjugated
Modification	Unmodified
Isotype	IgG
Clonality	Polyclonal
Form	Liquid
Storage	Store at 4°C short term. Aliquot and store at -20°C long term. Avoid freeze/thaw cycles.
Buffer	Liquid in PBS containing 50% glycerol, 0.5% BSA and 0.02% New type preservative N.
Purification	Affinity purification

Immunogen

Gene Name	P2RY8
Alternative Names	P2RY8; P2Y purinoceptor 8; P2Y8
Gene ID	286530.0
SwissProt ID	Q86VZ1.The antiserum was produced against synthesized peptide derived from human P2RY8. AA range:192-241

Application

Dilution Ratio	WB 1:500 - 1:2000. ELISA: 1:20000. Not yet tested in other applications.
Molecular Weight	41kD

Background

Product Name: P2RY8 Rabbit Polyclonal Antibody
Catalog #: AP Rab15604

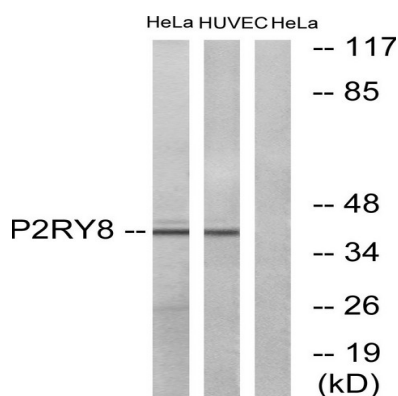


purinergic receptor P2Y8(P2RY8) Homo sapiens The protein encoded by this gene belongs to the family of G-protein coupled receptors, that are preferentially activated by adenosine and uridine nucleotides. This gene is moderately expressed in undifferentiated HL60 cells, and is located on both chromosomes X and Y. [provided by RefSeq, Jul 2008],function:Probable receptor for purines coupled to G-proteins.,induction:Down-regulated during granulocytic regulation.,miscellaneous:The gene encoding for this protein is located in the pseudoautosomal region 1 (PAR1) of X and Y chromosomes.,similarity:Belongs to the G-protein coupled receptor 1 family.,tissue specificity:Barely detectable in normal blood leukocytes. Weaker expression was seen in heart, kidney and lung. Not detected in brain.,

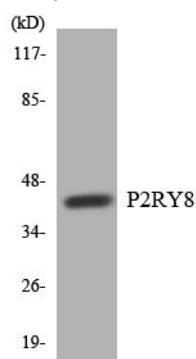
Research Area

Neuroactive ligand-receptor interaction;

Image Data

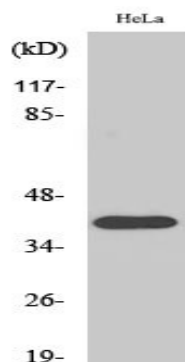


Western blot analysis of lysates from HeLa and HUVEC cells, using P2RY8 Antibody. The lane on the right is blocked with the synthesized peptide.



Western blot analysis of the lysates from COLO205 cells using P2RY8 antibody.

Product Name: P2RY8 Rabbit Polyclonal Antibody
Catalog #: APRab15604



Western Blot analysis of various cells using P2RY8 Polyclonal Antibody diluted at 1 : 2000

Note

For research use only.