

Product Name: OTX1 Rabbit Polyclonal Antibody
Catalog #: APRab15540



Summary

Production Name	OTX1 Rabbit Polyclonal Antibody
Description	Rabbit Polyclonal Antibody
Host	Rabbit
Application	WB
Reactivity	Human,Mouse,Rat

Performance

Conjugation	Unconjugated
Modification	Unmodified
Isotype	IgG
Clonality	Polyclonal
Form	Liquid
Storage	Store at 4°C short term. Aliquot and store at -20°C long term. Avoid freeze/thaw cycles.
Buffer	Liquid in PBS containing 50% glycerol, 0.5% BSA and 0.61% New type preservative N.
Purification	Affinity purification

Immunogen

Gene Name	OTX1
Alternative Names	Homeobox protein OTX1 (Orthodenticle homolog 1)
Gene ID	5013.0
SwissProt ID	P32242.Synthesized peptide derived from human OTX1 AA range: 236-286

Application

Dilution Ratio	WB 1:500-2000
Molecular Weight	38kD

Background

This gene encodes a member of the bicoid sub-family of homeodomain-containing transcription factors. The encoded protein acts as a transcription factor and may play a role in brain and sensory organ development. A similar protein in

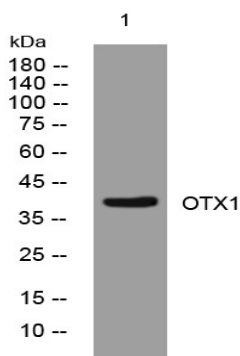
Product Name: OTX1 Rabbit Polyclonal Antibody
Catalog #: AP Rab15540



mouse is required for proper brain and sensory organ development and can cause epilepsy. Alternative splicing results in multiple transcript variants. [provided by RefSeq, Jan 2015],developmental stage:Embryo.,function:Probably plays a role in the development of the brain and the sense organs. Can bind to the BCD target sequence (BTS): 5'-TCTAATCCC-3',similarity:Belongs to the paired homeobox family. Bicoid subfamily.,similarity:Contains 1 homeobox DNA-binding domain.,tissue specificity:Expressed in brain.,

Research Area

Image Data



Western blot analysis of lysates from HCT116 cells, primary antibody was diluted at 1:1000, 4° over night

Note

For research use only.