

Product Name: OR2L2 Rabbit Polyclonal Antibody
Catalog #: APRab15403



Summary

Production Name	OR2L2 Rabbit Polyclonal Antibody
Description	Rabbit Polyclonal Antibody
Host	Rabbit
Application	WB
Reactivity	Human,Rat,Mouse

Performance

Conjugation	Unconjugated
Modification	Unmodified
Isotype	IgG
Clonality	Polyclonal
Form	Liquid
Storage	Store at 4°C short term. Aliquot and store at -20°C long term. Avoid freeze/thaw cycles.
Buffer	Liquid in PBS containing 50% glycerol, and 0.02% New type preservative N.
Purification	Affinity purification

Immunogen

Gene Name	OR2L2 OR2L12 OR2L4P
Alternative Names	
Gene ID	26246.0
SwissProt ID	Q8NH16.Synthesized peptide derived from human protein . at AA range: 70-150

Application

Dilution Ratio	WB 1:500-2000 ELISA 1:5000-20000
Molecular Weight	34kD

Background

olfactory receptor family 2 subfamily L member 2(OR2L2) Homo sapiens Olfactory receptors interact with odorant molecules in the nose, to initiate a neuronal response that triggers the perception of a smell. The olfactory receptor

Product Name: OR2L2 Rabbit Polyclonal Antibody
Catalog #: APRab15403

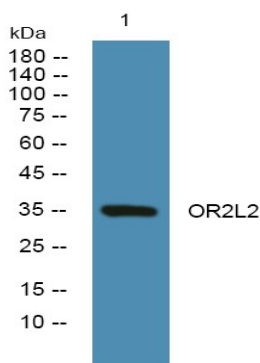


proteins are members of a large family of G-protein-coupled receptors (GPCR) arising from single coding-exon genes. Olfactory receptors share a 7-transmembrane domain structure with many neurotransmitter and hormone receptors and are responsible for the recognition and G protein-mediated transduction of odorant signals. The olfactory receptor gene family is the largest in the genome. The nomenclature assigned to the olfactory receptor genes and proteins for this organism is independent of other organisms. [provided by RefSeq, Jul 2008],function:Odorant receptor „similarity:Belongs to the G-protein coupled receptor 1 family.,

Research Area

Olfactory transduction;

Image Data



Western blot analysis of lysates from KB cells, primary antibody was diluted at 1:1000, 4°over night

Note

For research use only.