

Product Name: OPN Rabbit Polyclonal Antibody
Catalog #: APRab15358



Summary

Production Name	OPN Rabbit Polyclonal Antibody
Description	Rabbit Polyclonal Antibody
Host	Rabbit
Application	WB,ELISA
Reactivity	Human,Mouse,Rat

Performance

Conjugation	Unconjugated
Modification	Unmodified
Isotype	IgG
Clonality	Polyclonal
Form	Liquid
Storage	Store at 4°C short term. Aliquot and store at -20°C long term. Avoid freeze/thaw cycles.
Buffer	Liquid in PBS containing 50% glycerol, 0.5% BSA and 0.02% New type preservative N.
Purification	Affinity purification

Immunogen

Gene Name	SPP1
Alternative Names	SPP1; BNSP; OPN; PSEC0156; Osteopontin; Bone sialoprotein 1; Nephropontin; Secreted phosphoprotein 1; SPP-1; Urinary stone protein; Uropontin
Gene ID	6696.0
SwissProt ID	P10451.The antiserum was produced against synthesized peptide derived from human Osteopontin. AA range:261-310

Application

Dilution Ratio	WB 1:500-2000 ELISA 1:5000-20000
Molecular Weight	60kD

Product Name: OPN Rabbit Polyclonal Antibody
Catalog #: AP Rab15358



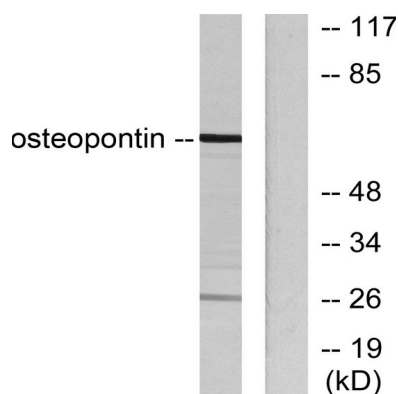
Background

secreted phosphoprotein 1 (SPP1) Homo sapiens The protein encoded by this gene is involved in the attachment of osteoclasts to the mineralized bone matrix. The encoded protein is secreted and binds hydroxyapatite with high affinity. The osteoclast vitronectin receptor is found in the cell membrane and may be involved in the binding to this protein. This protein is also a cytokine that upregulates expression of interferon-gamma and interleukin-12. Several transcript variants encoding different isoforms have been found for this gene. [provided by RefSeq, Oct 2011], disease: This protein plays a principal role in urinary stone formation as the stone matrix., function: Acts as a cytokine involved in enhancing production of interferon-gamma and interleukin-12 and reducing production of interleukin-10 and is essential in the pathway that leads to type I immunity., function: Binds tightly to hydroxyapatite. Appears to form an integral part of the mineralized matrix. Probably important to cell-matrix interaction., online information: Osteopontin entry, PTM: Extensively phosphorylated on clustered serine residues., PTM: N- and O-glycosylated., similarity: Belongs to the osteopontin family., subunit: Ligand for integrin alpha-V/beta-3.,

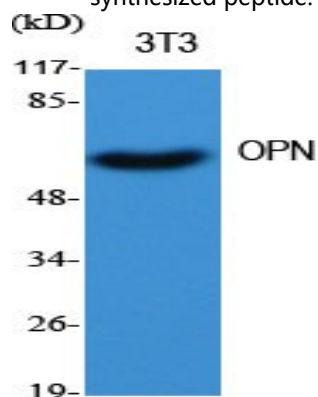
Research Area

Focal adhesion; ECM-receptor interaction; Toll_Like;

Image Data



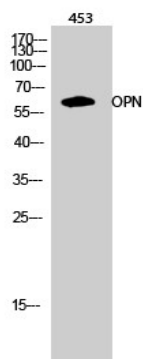
Western blot analysis of lysates from LOVO cells, using Osteopontin Antibody. The lane on the right is blocked with the synthesized peptide.



Product Name: OPN Rabbit Polyclonal Antibody
Catalog #: APRab15358



Western Blot analysis of various cells using OPN Polyclonal Antibody diluted at 1 : 500



Western Blot analysis of 453 cells using OPN Polyclonal Antibody diluted at 1 : 500

Note

For research use only.