

## Summary

|                        |                                 |
|------------------------|---------------------------------|
| <b>Production Name</b> | Op18 Rabbit Polyclonal Antibody |
| <b>Description</b>     | Rabbit Polyclonal Antibody      |
| <b>Host</b>            | Rabbit                          |
| <b>Application</b>     | WB,IHC,IF,ELISA                 |
| <b>Reactivity</b>      | Human,Mouse,Rat                 |

## Performance

|                     |  |
|---------------------|--|
| <b>Conjugation</b>  | Unconjugated   |
| <b>Modification</b> | Unmodified   |
| <b>Isotype</b>      | IgG  |
| <b>Clonality</b>    | Polyclonal   |
| <b>Form</b>         | Liquid   |
| <b>Storage</b>      | Store at 4°C short term. Aliquot and store at -20°C long term. Avoid freeze/thaw cycles. |
| <b>Buffer</b>       | Liquid in PBS containing 50% glycerol, 0.5% BSA and 0.02% New type preservative N.       |
| <b>Purification</b> | Affinity purification  |

## Immunogen

|                          |   |
|--------------------------|---|
| <b>Gene Name</b>         | STMN1   |
| <b>Alternative Names</b> | STMN1; C1orf215; LAP18; OP18; Stathmin; Leukemia-associated phosphoprotein p18; Metablastin; Oncoprotein 18; Op18; Phosphoprotein p19; pp19; ProsoLin; Protein Pr22; pp17 |
| <b>Gene ID</b>           | 3925.0  |
| <b>SwissProt ID</b>      | P16949.The antiserum was produced against synthesized peptide derived from human Stathmin 1. AA range:9-58  |

## Application

|                       |  |
|-----------------------|--|
| <b>Dilution Ratio</b> | WB 1:500 - 1:2000. IHC 1:100 - 1:300. IF 1:200 - 1:1000. ELISA: 1:10000. Not yet tested in other applications. |
|-----------------------|--|

---

**Molecular Weight**      19kD

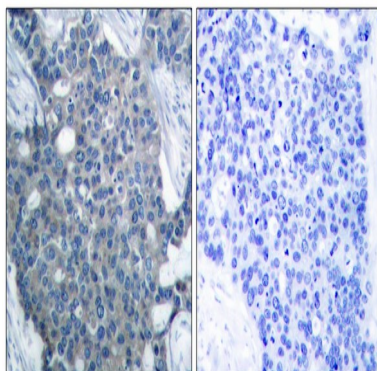
## Background

This gene belongs to the stathmin family of genes. It encodes a ubiquitous cytosolic phosphoprotein proposed to function as an intracellular relay integrating regulatory signals of the cellular environment. The encoded protein is involved in the regulation of the microtubule filament system by destabilizing microtubules. It prevents assembly and promotes disassembly of microtubules. Multiple transcript variants encoding different isoforms have been found for this gene. [provided by RefSeq, Feb 2009], disease: Present in much greater abundance in cells from patients with acute leukemia of different subtypes than in normal peripheral blood lymphocytes, non-leukemic proliferating lymphoid cells, bone marrow cells, or cells from patients with chronic lymphoid or myeloid leukemia., function: Involved in the regulation of the microtubule (MT) filament system by destabilizing microtubules. Prevents assembly and promotes disassembly of microtubules. Phosphorylation at Ser-16 may be required for axon formation during neurogenesis. Involved in the control of the learned and innate fear., PTM: Many different phosphorylated forms are observed depending on specific combinations among the sites which can be phosphorylated. MAPK is responsible for the phosphorylation of stathmin in response to NGF. Phosphorylation at Ser-16 seems to be required for neuron polarization (By similarity). Phosphorylation at Ser-63 reduces tubulin binding 10-fold and suppresses the MT polymerization inhibition activity., similarity: Belongs to the stathmin family., subunit: Binds to two alpha/beta-tubulin heterodimers. Interacts with KIST., tissue specificity: Ubiquitous. Expression is strongest in fetal and adult brain, spinal cord, and cerebellum, followed by thymus, bone marrow, testis, and fetal liver. Expression is intermediate in colon, ovary, placenta, uterus, and trachea, and is readily detected at substantially lower levels in all other tissues examined. Lowest expression is found in adult liver.,

## Research Area

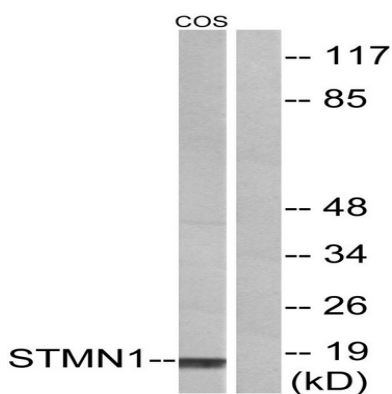
MAPK\_ERK\_Growth; MAPK\_G\_Protein;

## Image Data

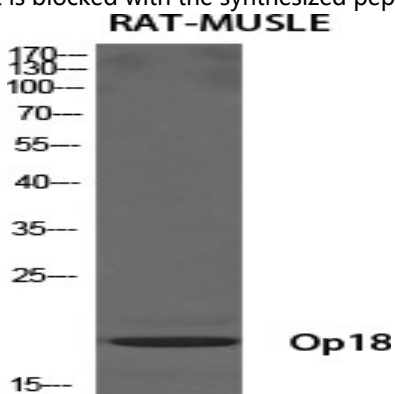


Immunohistochemistry analysis of paraffin-embedded human breast carcinoma tissue, using Stathmin 1 Antibody. The picture on the right is blocked with the synthesized peptide.

**Product Name: Op18 Rabbit Polyclonal Antibody**  
**Catalog #: APRab15354**



Western blot analysis of lysates from COS7 cells, treated with PMA 1ng/ml 15', using Stathmin 1 Antibody. The lane on the right is blocked with the synthesized peptide.

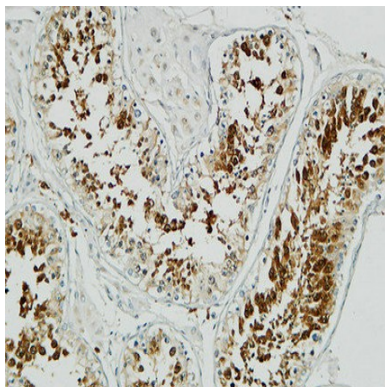


Western Blot analysis of various cells using Op18 Polyclonal Antibody diluted at 1: 500

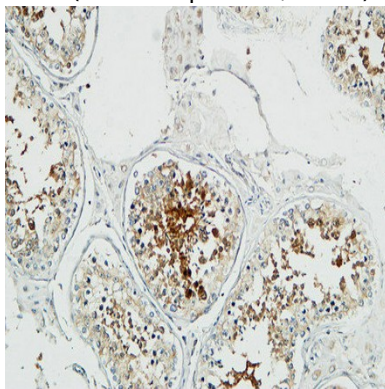


Western Blot analysis of Jurkat cells using Op18 Polyclonal Antibody diluted at 1: 500

**Product Name: Op18 Rabbit Polyclonal Antibody**  
**Catalog #: APRab15354**



Immunohistochemical analysis of paraffin-embedded Human testis. 1, Antibody was diluted at 1:100 (4°,overnight) . 2, High-pressure and temperature EDTA, pH8.0 was used for antigen retrieval. 3,Secondary antibody was diluted at 1:200 (room temperature, 30min) .



Immunohistochemical analysis of paraffin-embedded Human testis. 1, Antibody was diluted at 1:100 (4°,overnight) . 2, High-pressure and temperature EDTA, pH8.0 was used for antigen retrieval. 3,Secondary antibody was diluted at 1:200 (room temperature, 30min) .

## **Note**

For research use only.