

**Product Name: Olfactory receptor 8J3 Rabbit Polyclonal Antibody**  
**Catalog #: APRab15332**

---

## Summary

<b>Production Name</b>	Olfactory receptor 8J3 Rabbit Polyclonal Antibody
<b>Description</b>	Rabbit Polyclonal Antibody
<b>Host</b>	Rabbit
<b>Application</b>	WB,ELISA
<b>Reactivity</b>	Human,Rat,Mouse

## Performance

<b>Conjugation</b>	Unconjugated
<b>Modification</b>	Unmodified
<b>Isotype</b>	IgG
<b>Clonality</b>	Polyclonal
<b>Form</b>	Liquid
<b>Storage</b>	Store at 4°C short term. Aliquot and store at -20°C long term. Avoid freeze/thaw cycles.
<b>Buffer</b>	Liquid in PBS containing 50% glycerol, 0.5% BSA and 0.02% New type preservative N.
<b>Purification</b>	Affinity purification

## Immunogen

<b>Gene Name</b>	OR8J3
<b>Alternative Names</b>	OR8J3; Olfactory receptor 8J3; Olfactory receptor OR11-173
<b>Gene ID</b>	81168.0
<b>SwissProt ID</b>	Q8NGG0.The antiserum was produced against synthesized peptide derived from human OR8J3. AA range:232-281

## Application

<b>Dilution Ratio</b>	WB 1:500 - 1:2000. ELISA: 1:10000. Not yet tested in other applications.
<b>Molecular Weight</b>	35kD

**Product Name: Olfactory receptor 8J3 Rabbit Polyclonal Antibody**  
**Catalog #: AP Rab15332**

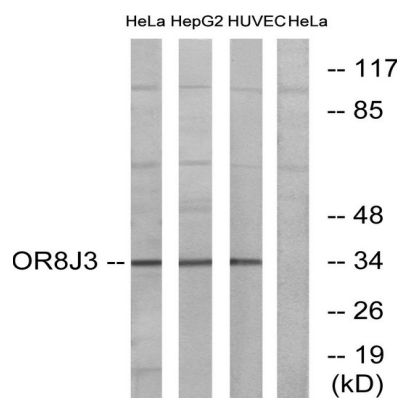
## Background

function:Odorant receptor „similarity:Belongs to the G-protein coupled receptor 1 family„function:Odorant receptor „similarity:Belongs to the G-protein coupled receptor 1 family„

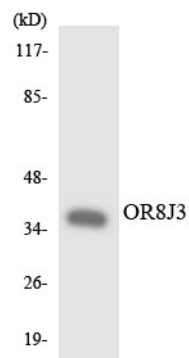
## Research Area

Olfactory transduction;

## Image Data



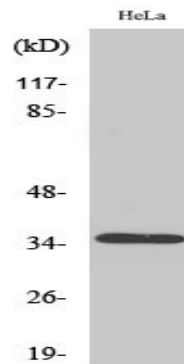
Western blot analysis of lysates from HeLa, HepG2, and HUVEC cells, using OR8J3 Antibody. The lane on the right is blocked with the synthesized peptide.



Western blot analysis of the lysates from K562 cells using OR8J3 antibody.

**Product Name: Olfactory receptor 8J3 Rabbit Polyclonal Antibody**  
**Catalog #: APRab15332**

---



Western Blot analysis of various cells using Olfactory receptor 8J3 Polyclonal Antibody

### Note

For research use only.