

Product Name: OBCAM Rabbit Polyclonal Antibody
Catalog #: APRab15088



Summary

Production Name	OBCAM Rabbit Polyclonal Antibody
Description	Rabbit Polyclonal Antibody
Host	Rabbit
Application	WB,ELISA
Reactivity	Human,Mouse,Rat,Monkey

Performance

Conjugation	Unconjugated
Modification	Unmodified
Isotype	IgG
Clonality	Polyclonal
Form	Liquid
Storage	Store at 4°C short term. Aliquot and store at -20°C long term. Avoid freeze/thaw cycles.
Buffer	Liquid in PBS containing 50% glycerol, 0.5% BSA and 0.02% New type preservative N.
Purification	Affinity purification

Immunogen

Gene Name	OPCML
Alternative Names	OPCML; IGLON1; OBCAM; Opioid-binding protein/cell adhesion molecule; OBCAM; OPCML; Opioid-binding cell adhesion molecule; IgLON family member 1
Gene ID	4978.0
SwissProt ID	Q14982.The antiserum was produced against synthesized peptide derived from human OBCAM. AA range:152-201

Application

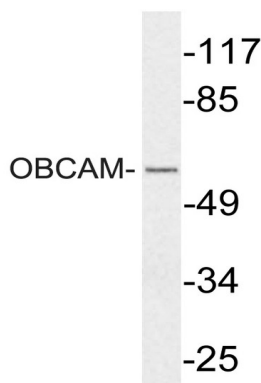
Dilution Ratio	WB 1:500 - 1:2000. ELISA: 1:10000
Molecular Weight	58kD

Background

This gene encodes a member of the IgLON subfamily in the immunoglobulin protein superfamily of proteins. The encoded preprotein is proteolytically processed to generate the mature protein. This protein is localized in the plasma membrane and may have an accessory role in opioid receptor function. This gene has an ortholog in rat and bovine. The opioid binding-cell adhesion molecule encoded by the rat gene binds opioid alkaloids in the presence of acidic lipids, exhibits selectivity for mu ligands and acts as a GPI-anchored protein. Since the encoded protein is highly conserved in species during evolution, it may have a fundamental role in mammalian systems. Alternative splicing results in multiple transcript variants, at least one of which encodes an isoform that is proteolytically processed. [provided by RefSeq, Jan 2016],disease:Defects in OPCML are associated with ovarian cancer [MIM:167000]. Ovarian cancer is the leading cause of death from gynecologic malignancy. It is characterized by advanced presentation with loco-regional dissemination in the peritoneal cavity and the rare incidence of visceral metastases. These typical features relate to the biology of the disease, which is a principal determinant of outcome.,function:Binds opioids in the presence of acidic lipids; probably involved in cell contact.,similarity:Belongs to the immunoglobulin superfamily. IgLON family.,similarity:Contains 3 Ig-like C2-type (immunoglobulin-like) domains.,

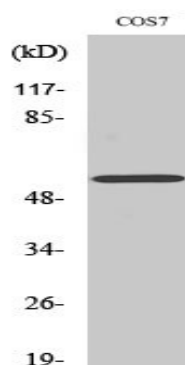
Research Area

Image Data



Western blot analysis of lysate from COS7 cells, using OBCAM antibody.

Product Name: OBCAM Rabbit Polyclonal Antibody
Catalog #: APRab15088



Western Blot analysis of various cells using OBCAM Polyclonal Antibody diluted at 1: 1000

Note

For research use only.