

Product Name: NSE2 Rabbit Polyclonal Antibody
Catalog #: APRab14911



Summary

Production Name	NSE2 Rabbit Polyclonal Antibody
Description	Rabbit Polyclonal Antibody
Host	Rabbit
Application	WB,ELISA
Reactivity	Human,Rat,Mouse

Performance

Conjugation	Unconjugated
Modification	Unmodified
Isotype	IgG
Clonality	Polyclonal
Form	Liquid
Storage	Store at 4°C short term. Aliquot and store at -20°C long term. Avoid freeze/thaw cycles.
Buffer	Liquid in PBS containing 50% glycerol, 0.5% BSA and 0.02% New type preservative N.
Purification	Affinity purification

Immunogen

Gene Name	FAM84B
Alternative Names	FAM84B; BCMP101; NSE2; Protein FAM84B; Breast cancer membrane protein 101; Protein NSE2
Gene ID	157638.0
SwissProt ID	Q96KN1.The antiserum was produced against synthesized peptide derived from human FAM84B. AA range:11-60

Application

Dilution Ratio	WB 1:500 - 1:2000. ELISA: 1:10000
Molecular Weight	38kD

Product Name: NSE2 Rabbit Polyclonal Antibody
Catalog #: APRab14911



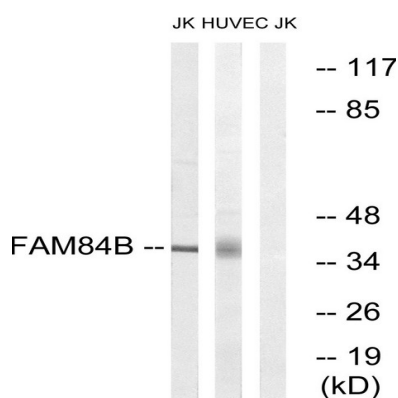
Background

similarity:Belongs to the FAM84 family.,tissue specificity:Expressed in esophageal squamous cell

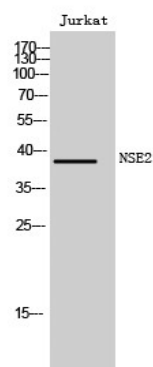
carcinomas.,similarity:Belongs to the FAM84 family.,tissue specificity:Expressed in esophageal squamous cell carcinomas.,

Research Area

Image Data



Western blot analysis of lysates from Jurkat and HUVEC cells, using FAM84B Antibody. The lane on the right is blocked with the synthesized peptide.



Western Blot analysis of Jurkat cells using NSE2 Polyclonal Antibody

Note

For research use only.