

Product Name: NRF-1 Rabbit Polyclonal Antibody
Catalog #: APRab14891



Summary

Production Name	NRF-1 Rabbit Polyclonal Antibody
Description	Rabbit Polyclonal Antibody
Host	Rabbit
Application	WB,ELISA
Reactivity	Human,Mouse,Rat,Bovine

Performance

Conjugation	Unconjugated
Modification	Unmodified
Isotype	IgG
Clonality	Polyclonal
Form	Liquid
Storage	Store at 4°C short term. Aliquot and store at -20°C long term. Avoid freeze/thaw cycles.
Buffer	Liquid in PBS containing 50% glycerol, 0.5% BSA and 0.02% New type preservative N.
Purification	Affinity purification

Immunogen

Gene Name	NRF1
Alternative Names	NRF1; Nuclear respiratory factor 1; NRF-1; Alpha palindromic-binding protein; Alpha-pal
Gene ID	4899.0
SwissProt ID	Q16656.The antiserum was produced against synthesized peptide derived from human NRF1. AA range:221-270

Application

Dilution Ratio	WB 1:500 - 1:2000. ELISA: 1:5000. Not yet tested in other applications.
Molecular Weight	54kD

Product Name: NRF-1 Rabbit Polyclonal Antibody
Catalog #: AP Rab14891



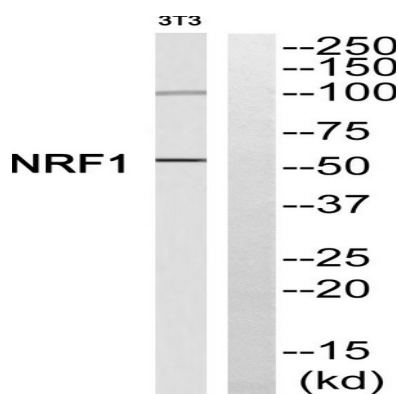
Background

This gene encodes a protein that homodimerizes and functions as a transcription factor which activates the expression of some key metabolic genes regulating cellular growth and nuclear genes required for respiration, heme biosynthesis, and mitochondrial DNA transcription and replication. The protein has also been associated with the regulation of neurite outgrowth. Alternative splicing results in multiple transcript variants. Confusion has occurred in bibliographic databases due to the shared symbol of NRF1 for this gene and for "nuclear factor (erythroid-derived 2)-like 1" which has an official symbol of NFE2L1. [provided by RefSeq, May 2014],function:Transcription factor that activates the expression of the EIF2S1 (EIF2-alpha) gene. Links the transcriptional modulation of key metabolic genes to cellular growth and development. Implicated in the control of nuclear genes required for respiration, heme biosynthesis, and mitochondrial DNA transcription and replication.,PTM:Phosphorylation enhances DNA binding.,similarity:Belongs to the NRF1/Ewg family.,subunit:Homodimer. Binds DNA as a dimer. Interacts with PPRC1.,tissue specificity:Ubiquitously expressed with strongest expression in skeletal muscle.,

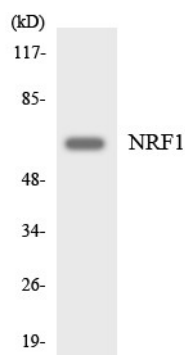
Research Area

Huntington's disease;

Image Data

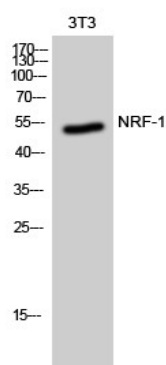


Western blot analysis of NRF1 Antibody. The lane on the right is blocked with the NRF1 peptide.



Western blot analysis of the lysates from HeLa cells using NRF1 antibody.

Product Name: NRF-1 Rabbit Polyclonal Antibody
Catalog #: APRab14891



Western Blot analysis of 3T3 cells using NRF-1 Polyclonal Antibody cells nucleus extracted by Minute TM Cytoplasmic and Nuclear Fractionation kit (SC-003, Invent biotech, MN, USA) .

Note

For research use only.