

Product Name: NRBP Rabbit Polyclonal Antibody
Catalog #: APRab14886



Summary

Production Name	NRBP Rabbit Polyclonal Antibody
Description	Rabbit Polyclonal Antibody
Host	Rabbit
Application	WB
Reactivity	Human,Mouse

Performance

Conjugation	Unconjugated
Modification	Unmodified
Isotype	IgG
Clonality	Polyclonal
Form	Liquid
Storage	Store at 4°C short term. Aliquot and store at -20°C long term. Avoid freeze/thaw cycles.
Buffer	Liquid in PBS containing 50% glycerol, and 0.02% New type preservative N.
Purification	Affinity purification

Immunogen

Gene Name	NRBP1 BCON3 NRBP
Alternative Names	
Gene ID	29959.0
SwissProt ID	Q9UHY1.Synthesized peptide derived from part region of human protein

Application

Dilution Ratio	WB 1:500-2000 ELISA 1:5000-20000
Molecular Weight	58kD

Background

caution:Author states that kinase activity observed in PubMed:11956649 may be due to sample contamination. This protein is predicted to be catalytically inactive.,domain:The protein kinase domain is predicted to be catalytically

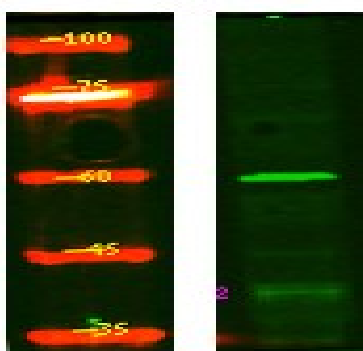
Product Name: NRBP Rabbit Polyclonal Antibody
Catalog #: APRab14886



inactive.,function:May play a role in subcellular trafficking between the endoplasmic reticulum and Golgi apparatus through interactions with the Rho-type GTPases. Binding to the NS3 protein of dengue virus type 2 appears to subvert this activity into the alteration of the intracellular membrane structure associated with flaviviral replication.,similarity:Belongs to the protein kinase superfamily. Ser/Thr protein kinase family.,similarity:Contains 1 protein kinase domain.,subcellular location:Colocalizes with activated RAC3 to endomembranes and at the cell periphery in lamellipodia.,subunit:Homodimer. Binds to MLF1, recruiting a serine kinase which phosphorylates both itself and MLF1. Phosphorylated MLF1 binds to YWHAZ and is retained in the cytoplasm.,tissue specificity:Ubiquitously expressed in all tissues examined with high levels in the testis.,caution:Author states that kinase activity observed in PubMed:11956649 may be due to sample contamination. This protein is predicted to be catalytically inactive.,domain:The protein kinase domain is predicted to be catalytically inactive.,function:May play a role in subcellular trafficking between the endoplasmic reticulum and Golgi apparatus through interactions with the Rho-type GTPases. Binding to the NS3 protein of dengue virus type 2 appears to subvert this activity into the alteration of the intracellular membrane structure associated with flaviviral replication.,similarity:Belongs to the protein kinase superfamily. Ser/Thr protein kinase family.,similarity:Contains 1 protein kinase domain.,subcellular location:Colocalizes with activated RAC3 to endomembranes and at the cell periphery in lamellipodia.,subunit:Homodimer. Binds to MLF1, recruiting a serine kinase which phosphorylates both itself and MLF1. Phosphorylated MLF1 binds to YWHAZ and is retained in the cytoplasm.,tissue specificity:Ubiquitously expressed in all tissues examined with high levels in the testis.,

Research Area

Image Data



Western Blot analysis of HEK293 lysis, using primary antibody at 1:1000 dilution. Secondary antibody was diluted at 1:10000

Note

For research use only.

Product Name: NRBP Rabbit Polyclonal Antibody
Catalog #: APRab14886

