

**Product Name: NPY2-R Rabbit Polyclonal Antibody**  
**Catalog #: APRab14860**



## Summary

<b>Production Name</b>	NPY2-R Rabbit Polyclonal Antibody
<b>Description</b>	Rabbit Polyclonal Antibody
<b>Host</b>	Rabbit
<b>Application</b>	IF, WB, ELISA
<b>Reactivity</b>	Human, Mouse, Rat

## Performance

<b>Conjugation</b>	Unconjugated
<b>Modification</b>	Unmodified
<b>Isotype</b>	IgG
<b>Clonality</b>	Polyclonal
<b>Form</b>	Liquid
<b>Storage</b>	Store at 4°C short term. Aliquot and store at -20°C long term. Avoid freeze/thaw cycles.
<b>Buffer</b>	Liquid in PBS containing 50% glycerol, 0.5% BSA and 0.02% New type preservative N.
<b>Purification</b>	Affinity purification

## Immunogen

<b>Gene Name</b>	NPY2R
<b>Alternative Names</b>	NPY2R; Neuropeptide Y receptor type 2; NPY2-R; NPY-Y2 receptor; Y2 receptor
<b>Gene ID</b>	4887.0
<b>SwissProt ID</b>	P49146. The antiserum was produced against synthesized peptide derived from human NPY2R. AA range: 1-50

## Application

<b>Dilution Ratio</b>	WB 1:500 - 1:2000. IF 1:200 - 1:1000. ELISA: 1:5000. Not yet tested in other applications.
<b>Molecular Weight</b>	43kD

## Background

**Product Name: NPY2-R Rabbit Polyclonal Antibody**  
**Catalog #: AP Rab14860**

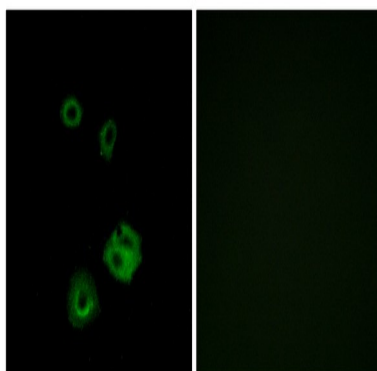


function: Receptor for neuropeptide Y and peptide YY. The rank order of affinity of this receptor for pancreatic polypeptides is PYY > NPY > PYY (3-36) > NPY (2-36) > [Ile-31, Gln-34] PP > [Leu-31, Pro-34] NPY > PP, [Pro-34] PYY and NPY free acid., similarity: Belongs to the G-protein coupled receptor 1 family., tissue specificity: High levels in amygdala, corpus callosum, hippocampus and subthalamic nucleus. Also detectable in caudate nucleus, hypothalamus and substantia nigra., function: Receptor for neuropeptide Y and peptide YY. The rank order of affinity of this receptor for pancreatic polypeptides is PYY > NPY > PYY (3-36) > NPY (2-36) > [Ile-31, Gln-34] PP > [Leu-31, Pro-34] NPY > PP, [Pro-34] PYY and NPY free acid., similarity: Belongs to the G-protein coupled receptor 1 family., tissue specificity: High levels in amygdala, corpus callosum, hippocampus and subthalamic nucleus. Also detectable in caudate nucleus, hypothalamus and substantia nigra.,

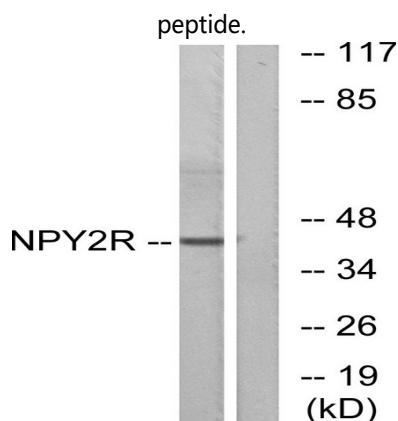
## Research Area

Neuroactive ligand-receptor interaction;

## Image Data

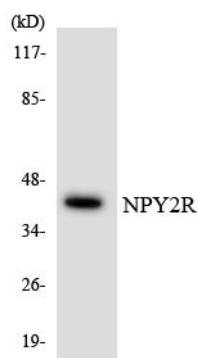


Immunofluorescence analysis of A549 cells, using NPY2R Antibody. The picture on the right is blocked with the synthesized

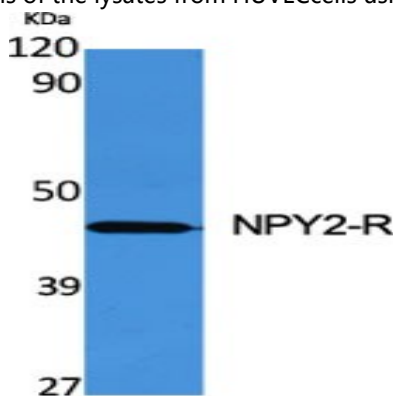


Western blot analysis of lysates from HepG2 cells, using NPY2R Antibody. The lane on the right is blocked with the synthesized peptide.

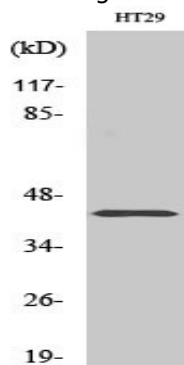
**Product Name: NPY2-R Rabbit Polyclonal Antibody**  
**Catalog #: APRab14860**



Western blot analysis of the lysates from HUVEC cells using NPY2R antibody.



Western Blot analysis of various cells using NPY2-R Polyclonal Antibody diluted at 1 : 500



Western Blot analysis of HT29 cells using NPY2-R Polyclonal Antibody diluted at 1 : 500

## Note

For research use only.