

**Product Name: NPDC-1 Rabbit Polyclonal Antibody**  
**Catalog #: AP Rab14834**



## Summary

<b>Production Name</b>	NPDC-1 Rabbit Polyclonal Antibody
<b>Description</b>	Rabbit Polyclonal Antibody
<b>Host</b>	Rabbit
<b>Application</b>	WB,ELISA
<b>Reactivity</b>	Human,Mouse,Rat

## Performance

<b>Conjugation</b>	Unconjugated
<b>Modification</b>	Unmodified
<b>Isotype</b>	IgG
<b>Clonality</b>	Polyclonal
<b>Form</b>	Liquid
<b>Storage</b>	Store at 4°C short term. Aliquot and store at -20°C long term. Avoid freeze/thaw cycles.
<b>Buffer</b>	Liquid in PBS containing 50% glycerol, 0.5% BSA and 0.02% New type preservative N.
<b>Purification</b>	Affinity purification

## Immunogen

<b>Gene Name</b>	NPDC1
<b>Alternative Names</b>	NPDC1; Neural proliferation differentiation and control protein 1; NPDC-1
<b>Gene ID</b>	56654.0
<b>SwissProt ID</b>	Q9NQX5.The antiserum was produced against synthesized peptide derived from human NPDC1. AA range:189-238

## Application

<b>Dilution Ratio</b>	WB 1:500 - 1:2000. ELISA: 1:20000. Not yet tested in other applications.
<b>Molecular Weight</b>	35kD

## Background

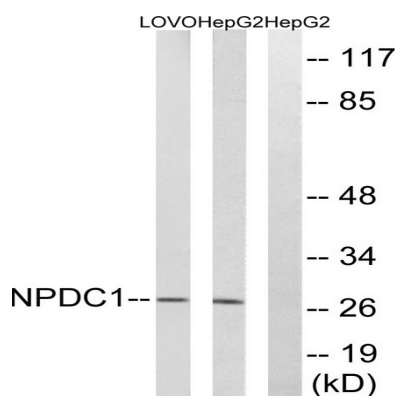
**Product Name: NPDC-1 Rabbit Polyclonal Antibody**  
**Catalog #: AP Rab14834**



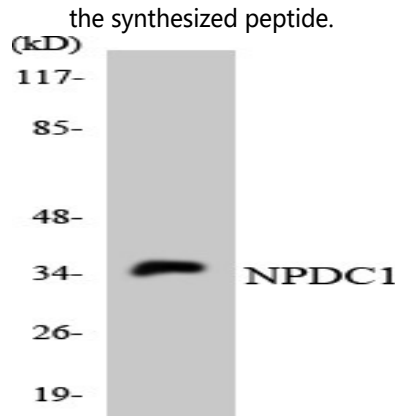
function:Suppresses oncogenic transformation in neural and non-neural cells and down-regulates neural cell proliferation. Might be involved in transcriptional regulation.,similarity:Belongs to the NPDC1/cab-1 family.,tissue specificity:Strongly expressed in adult brain; especially in hippocampus, frontal lobe and temporal lobe.,function:Suppresses oncogenic transformation in neural and non-neural cells and down-regulates neural cell proliferation. Might be involved in transcriptional regulation.,similarity:Belongs to the NPDC1/cab-1 family.,tissue specificity:Strongly expressed in adult brain; especially in hippocampus, frontal lobe and temporal lobe.,

## Research Area

## Image Data



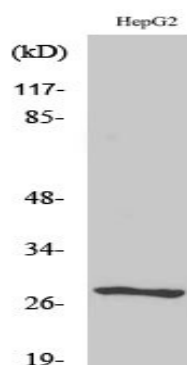
Western blot analysis of lysates from HepG2 and LOVO cells, using NPDC1 Antibody. The lane on the right is blocked with the synthesized peptide.



Western blot analysis of the lysates from K562 cells using NPDC1 antibody.

**Product Name: NPDC-1 Rabbit Polyclonal Antibody**  
**Catalog #: APRab14834**

---



Western Blot analysis of various cells using NPDC-1 Polyclonal Antibody

### **Note**

For research use only.