

---

## Summary

<b>Production Name</b>	Nodal Rabbit Polyclonal Antibody
<b>Description</b>	Rabbit Polyclonal Antibody
<b>Host</b>	Rabbit
<b>Application</b>	WB,IHC,ELISA
<b>Reactivity</b>	Human,Mouse,Rat

## Performance

<b>Conjugation</b>	Unconjugated
<b>Modification</b>	Unmodified
<b>Isotype</b>	IgG
<b>Clonality</b>	Polyclonal
<b>Form</b>	Liquid
<b>Storage</b>	Store at 4°C short term. Aliquot and store at -20°C long term. Avoid freeze/thaw cycles.
<b>Buffer</b>	Liquid in PBS containing 50% glycerol, 0.5% BSA and 0.02% New type preservative N.
<b>Purification</b>	Affinity purification

## Immunogen

<b>Gene Name</b>	NODAL
<b>Alternative Names</b>	NODAL; Nodal homolog
<b>Gene ID</b>	4838.0
<b>SwissProt ID</b>	Q96S42.The antiserum was produced against synthesized peptide derived from the C-terminal region of human NODAL. AA range:294-343

## Application

<b>Dilution Ratio</b>	WB 1:500 - 1:2000. IHC-p: 1:100-1:300. ELISA: 1:10000..
<b>Molecular Weight</b>	40kD

## Background

---

**Product Name: Nodal Rabbit Polyclonal Antibody**  
**Catalog #: APRab14780**

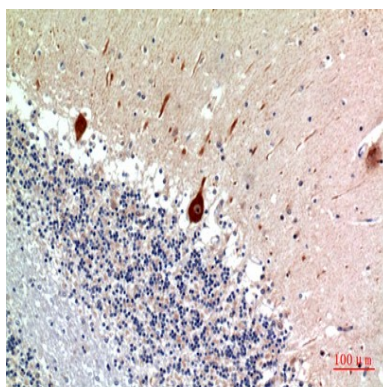


This gene encodes a secreted ligand of the TGF-beta (transforming growth factor-beta) superfamily of proteins. Ligands of this family bind various TGF-beta receptors leading to recruitment and activation of SMAD family transcription factors that regulate gene expression. The encoded preproprotein is proteolytically processed to generate the mature protein, which regulates early embryonic development. This protein is required for maintenance of human embryonic stem cell pluripotency and may play a role in human placental development. Mutations in this gene are associated with heterotaxy, a condition characterized by random orientation of visceral organs with respect to the left-right axis. [provided by RefSeq, Aug 2016],disease:Defects in NODAL may be a cause of situs ambiguus [MIM:601265].,function:Essential for mesoderm formation and axial patterning during embryonic development.,similarity:Belongs to the TGF-beta family.,subunit:Homodimer; disulfide-linked.,

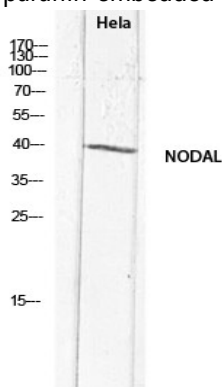
## Research Area

TGF-beta;

## Image Data



Immunohistochemical analysis of paraffin-embedded human-brain, antibody was diluted at 1:100



Western blot analysis of HeLa lysis using NODAL antibody. Secondary antibody was diluted at 1:20000

## Note

For research use only.

**Product Name: Nodal Rabbit Polyclonal Antibody**  
**Catalog #: APRab14780**

---

