

Product Name: NKp46 Rabbit Polyclonal Antibody
Catalog #: APRab14725



Summary

Production Name	NKp46 Rabbit Polyclonal Antibody
Description	Rabbit Polyclonal Antibody
Host	Rabbit
Application	WB,ELISA
Reactivity	Human,Rat,Mouse

Performance

Conjugation	Unconjugated
Modification	Unmodified
Isotype	IgG
Clonality	Polyclonal
Form	Liquid
Storage	Store at 4°C short term. Aliquot and store at -20°C long term. Avoid freeze/thaw cycles.
Buffer	Liquid in PBS containing 50% glycerol, 0.5% BSA and 0.02% New type preservative N.
Purification	Affinity purification

Immunogen

Gene Name	NCR1
Alternative Names	NCR1; LY94; Natural cytotoxicity triggering receptor 1; Lymphocyte antigen 94 homolog; NK cell-activating receptor; Natural killer cell p46-related protein; NK-p46; NKp46; hNKp46; CD antigen CD335
Gene ID	9437.0
SwissProt ID	O76036.The antiserum was produced against synthesized peptide derived from human NCR1. AA range:145-194

Application

Dilution Ratio	WB 1:500 - 1:2000. ELISA: 1:10000
Molecular Weight	40kD

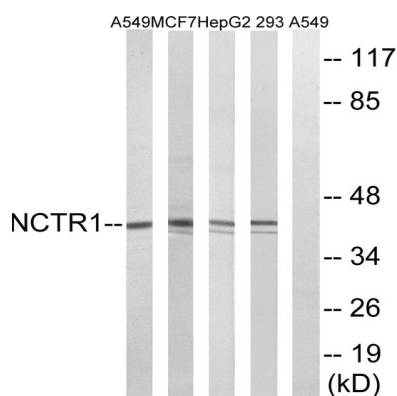
Background

function: Cytotoxicity-activating receptor that may contribute to the increased efficiency of activated natural killer (NK) cells to mediate tumor cell lysis., PTM: N-glycosylated., PTM: O-glycosylated., similarity: Belongs to the natural cytotoxicity receptor (NCR) family., similarity: Contains 2 Ig-like (immunoglobulin-like) domains., subunit: Interacts with CD3Z and FCER1G., tissue specificity: Selectively expressed by both resting and activated NK cells., function: Cytotoxicity-activating receptor that may contribute to the increased efficiency of activated natural killer (NK) cells to mediate tumor cell lysis., PTM: N-glycosylated., PTM: O-glycosylated., similarity: Belongs to the natural cytotoxicity receptor (NCR) family., similarity: Contains 2 Ig-like (immunoglobulin-like) domains., subunit: Interacts with CD3Z and FCER1G., tissue specificity: Selectively expressed by both resting and activated NK cells.,

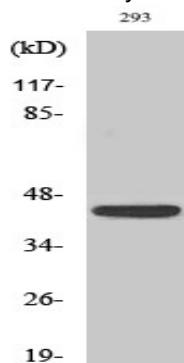
Research Area

Natural killer cell mediated cytotoxicity;

Image Data



Western blot analysis of lysates from 293, HepG2, MCF-7, and A549 cells, using NCR1 Antibody. The lane on the right is blocked with the synthesized peptide.



Western Blot analysis of various cells using NKp46 Polyclonal Antibody cells nucleus extracted by Minute TM Cytoplasmic and Nuclear Fractionation kit (SC-003, Invent biotech, MN, USA) .

Product Name: NKp46 Rabbit Polyclonal Antibody
Catalog #: APRab14725



Note

For research use only.