

Product Name: NKIAMRE Rabbit Polyclonal Antibody
Catalog #: APRab14722



Summary

Production Name	NKIAMRE Rabbit Polyclonal Antibody
Description	Rabbit Polyclonal Antibody
Host	Rabbit
Application	IHC,ELISA
Reactivity	Human,Rat,Mouse

Performance

Conjugation	Unconjugated
Modification	Unmodified
Isotype	IgG
Clonality	Polyclonal
Form	Liquid
Storage	Store at 4°C short term. Aliquot and store at -20°C long term. Avoid freeze/thaw cycles.
Buffer	Liquid in PBS containing 50% glycerol, 0.5% BSA and 0.02% New type preservative N.
Purification	Affinity purification

Immunogen

Gene Name	CDKL3
Alternative Names	CDKL3; NKIAMRE; Cyclin-dependent kinase-like 3; Serine/threonine-protein kinase NKIAMRE
Gene ID	51265.0
SwissProt ID	Q8IVW4.The antiserum was produced against synthesized peptide derived from human CDKL3. AA range:291-340

Application

Dilution Ratio	IHC 1:100-1:300 ELISA: 1:5000
Molecular Weight	67kD

Background

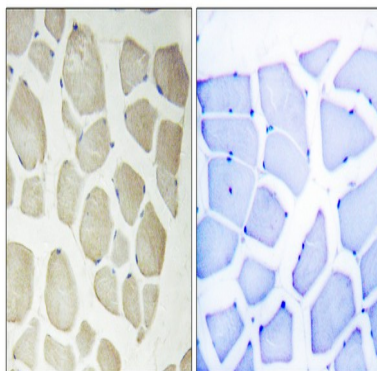
Product Name: NKIAMRE Rabbit Polyclonal Antibody
Catalog #: APRab14722



The protein encoded by this gene is a member of cyclin-dependent protein kinase (CDK) family. CDK family members are highly similar to the gene products of *Saccharomyces cerevisiae* cdc28, and *Schizosaccharomyces pombe* cdc2, and are known to be important regulators of cell cycle progression. This gene was identified as a gene absent in leukemic patients with chromosome 5q deletion. This loss may be an important determinant of dysmyelopoiesis. Alternative splicing results in multiple transcript variants encoding different isoforms. [provided by RefSeq, Jul 2008], catalytic activity: ATP + a protein = ADP + a phosphoprotein., domain: The [NKR]KIAxRE motif seems to be a cyclin-binding region., similarity: Belongs to the protein kinase superfamily. CMGC Ser/Thr protein kinase family. CDC2/CDKX subfamily., similarity: Contains 1 protein kinase domain.,

Research Area

Image Data



Immunohistochemistry analysis of paraffin-embedded human skeletal muscle, using CDKL3 Antibody. The picture on the right is blocked with the synthesized peptide.

Note

For research use only.