

**Product Name: NFE2 Rabbit Polyclonal Antibody**  
**Catalog #: APRab14646**



## Summary

<b>Production Name</b>	NFE2 Rabbit Polyclonal Antibody
<b>Description</b>	Rabbit Polyclonal Antibody
<b>Host</b>	Rabbit
<b>Application</b>	WB
<b>Reactivity</b>	Human,Mouse,Rat

## Performance

<b>Conjugation</b>	Unconjugated
<b>Modification</b>	Unmodified
<b>Isotype</b>	IgG
<b>Clonality</b>	Polyclonal
<b>Form</b>	Liquid
<b>Storage</b>	Store at 4°C short term. Aliquot and store at -20°C long term. Avoid freeze/thaw cycles.
<b>Buffer</b>	Liquid in PBS containing 50% glycerol, and 0.02% New type preservative N.
<b>Purification</b>	Affinity purification

## Immunogen

<b>Gene Name</b>	NFE2
<b>Alternative Names</b>	
<b>Gene ID</b>	4778.0
<b>SwissProt ID</b>	Q16621.Synthesized peptide derived from part region of human protein

## Application

<b>Dilution Ratio</b>	WB 1:500-2000 ELISA 1:5000-20000
<b>Molecular Weight</b>	41kD

## Background

function:Required for activity at the locus control region (LCR) upstream of the globin gene complexes. Requires p18 NF-E2 for binding to the NF-E2 motif. May play a role in all aspects of hemoglobin production: globin synthesis, heme synthesis,

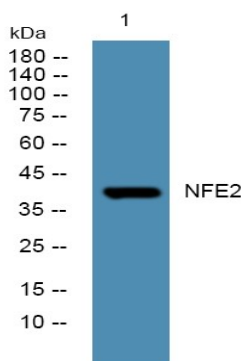
**Product Name: NFE2 Rabbit Polyclonal Antibody**  
**Catalog #: AP Rab14646**



and the procurement of iron.,similarity:Belongs to the bZIP family.,similarity:Belongs to the bZIP family. CNC subfamily.,similarity:Contains 1 bZIP domain.,subunit:Interacts with MLL2; leading to activate transcription of the beta-globin locus (By similarity). Heterodimer of p45 NF-E2 and p18 NF-E2. Forms high affinity heterodimer with MAFG; the interaction promotes erythropoiesis.,tissue specificity:Expressed in hematopoietic cells and also in colon and testis.,function:Required for activity at the locus control region (LCR) upstream of the globin gene complexes. Requires p18 NF-E2 for binding to the NF-E2 motif. May play a role in all aspects of hemoglobin production: globin synthesis, heme synthesis, and the procurement of iron.,similarity:Belongs to the bZIP family.,similarity:Belongs to the bZIP family. CNC subfamily.,similarity:Contains 1 bZIP domain.,subunit:Interacts with MLL2; leading to activate transcription of the beta-globin locus (By similarity). Heterodimer of p45 NF-E2 and p18 NF-E2. Forms high affinity heterodimer with MAFG; the interaction promotes erythropoiesis.,tissue specificity:Expressed in hematopoietic cells and also in colon and testis.,

## Research Area

## Image Data



Western blot analysis of lysates from U2OS cells, primary antibody was diluted at 1:1000, 4°over night

## Note

For research use only.