

**Product Name: Neuroglycan C Rabbit Polyclonal Antibody**  
**Catalog #: APRab14610**

---

## Summary

<b>Production Name</b>	Neuroglycan C Rabbit Polyclonal Antibody
<b>Description</b>	Rabbit Polyclonal Antibody
<b>Host</b>	Rabbit
<b>Application</b>	WB,
<b>Reactivity</b>	Human,Mouse,Rat

## Performance

<b>Conjugation</b>	Unconjugated
<b>Modification</b>	Unmodified
<b>Isotype</b>	IgG
<b>Clonality</b>	Polyclonal
<b>Form</b>	Liquid
<b>Storage</b>	Store at 4°C short term. Aliquot and store at -20°C long term. Avoid freeze/thaw cycles.
<b>Buffer</b>	Liquid in PBS containing 50% glycerol, 0.5% BSA and 0.02% New type preservative N.
<b>Purification</b>	Affinity purification

## Immunogen

<b>Gene Name</b>	CSPG5
<b>Alternative Names</b>	CSPG5; CALEB; NGC; Chondroitin sulfate proteoglycan 5; Acidic leucine-rich EGF-like domain-containing brain protein; Neuroglycan C
<b>Gene ID</b>	10675.0
<b>SwissProt ID</b>	O95196.The antiserum was produced against synthesized peptide derived from human CSPG5. AA range:211-260

## Application

<b>Dilution Ratio</b>	WB 1:500-2000
<b>Molecular Weight</b>	60kD

**Product Name: Neuroglycan C Rabbit Polyclonal Antibody**  
**Catalog #: APRab14610**

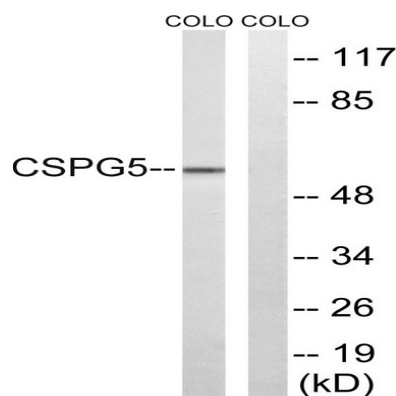
---

## Background

The protein encoded by this gene is a proteoglycan that may function as a neural growth and differentiation factor. Several transcript variants encoding different isoforms have been found for this gene. [provided by RefSeq, May 2011],developmental stage:Expressed in brain of 3 months, 5 and 10-year-old individuals.,function:May function as a growth and differentiation factor involved in neuritogenesis. May induce ERBB3 activation.,miscellaneous:Different forms of various molecular weight have been observed. Such forms are possibly due to different levels of glycosylation, phosphorylation and/or protein cleavage.,PTM:N-glycosylated.,PTM:O-glycosylated; contains chondroitin sulfate glycans. Part-time proteoglycan, expressed in part as a proteoglycan exhibiting chondroitin sulfate glycans and in part as a non-proteoglycan form. The relative amount of both forms depends on tissues and tissues maturation.,PTM:Phosphorylated; in intracellular and extracellular parts.,similarity:Contains 1 EGF-like domain.,subcellular location:In neurons, localizes to synaptic junctions (By similarity). Also detected in the endoplasmic reticulum and the Golgi (By similarity). Partially enriched in lipid rafts.,subunit:Binds TNR and probably TNC (By similarity). Interacts with ERBB3 and GOPC.,tissue specificity:Restricted to brain (at protein level),.

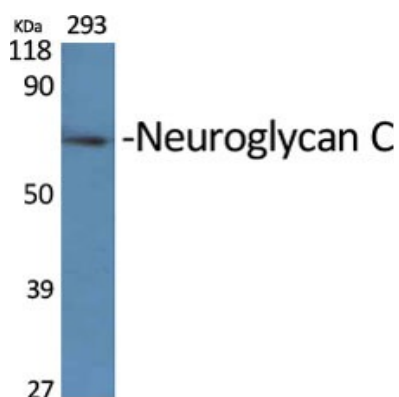
## Research Area

## Image Data

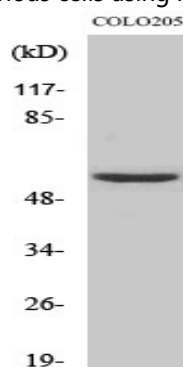


Western blot analysis of lysates from COLO and HeLa cells, using CSPG5 Antibody. The lane on the right is blocked with the synthesized peptide.

**Product Name: Neuroglycan C Rabbit Polyclonal Antibody**  
**Catalog #: AP Rab14610**



Western Blot analysis of various cells using Neuroglycan C Polyclonal Antibody



Western Blot analysis of HeLa cells using Neuroglycan C Polyclonal Antibody

## Note

For research use only.