

Product Name: NEK6 Rabbit Polyclonal Antibody
Catalog #: APRab14556



Summary

Production Name	NEK6 Rabbit Polyclonal Antibody
Description	Rabbit Polyclonal Antibody
Host	Rabbit
Application	WB
Reactivity	Human,Rat,Mouse

Performance

Conjugation	Unconjugated
Modification	Unmodified
Isotype	IgG
Clonality	Polyclonal
Form	Liquid
Storage	Store at 4°C short term. Aliquot and store at -20°C long term. Avoid freeze/thaw cycles.
Buffer	Liquid in PBS containing 50% glycerol, and 0.02% New type preservative N.
Purification	Affinity purification

Immunogen

Gene Name	NEK6
Alternative Names	
Gene ID	10783.0
SwissProt ID	Q9HC98.Synthesized peptide derived from human protein . at AA range: 90-170

Application

Dilution Ratio	WB 1:500-2000 ELISA 1:5000-20000
Molecular Weight	34kD

Background

The protein encoded by this gene is a kinase required for progression through the metaphase portion of mitosis. Inhibition of the encoded protein can lead to apoptosis. This protein also can enhance tumorigenesis by suppressing tumor cell

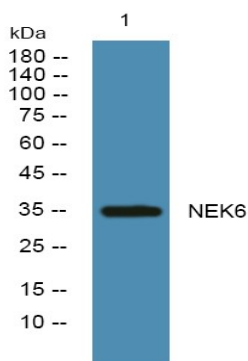
Product Name: NEK6 Rabbit Polyclonal Antibody
Catalog #: APRab14556



senescence. Several transcript variants encoding a few different isoforms have been found for this gene. [provided by RefSeq, Oct 2011],catalytic activity:ATP + a protein = ADP + a phosphoprotein.,cofactor:Magnesium.,function:Activated during M phase. Required for chromosome segregation at metaphase-anaphase transition and therefore for mitotic progression. Inhibition of activity results in apoptosis.,PTM:Autophosphorylated.,similarity:Belongs to the protein kinase superfamily.,similarity:Belongs to the protein kinase superfamily. NEK Ser/Thr protein kinase family. NIMA subfamily.,similarity:Contains 1 protein kinase domain.,tissue specificity:Ubiquitous, with highest expression in heart and skeletal muscle.,

Research Area

Image Data



Western blot analysis of lysates from U2OS cells, primary antibody was diluted at 1:1000, 4°over night

Note

For research use only.