

**Product Name: NEEP21 Rabbit Polyclonal Antibody**  
**Catalog #: APRab14541**



## Summary

<b>Production Name</b>	NEEP21 Rabbit Polyclonal Antibody
<b>Description</b>	Rabbit Polyclonal Antibody
<b>Host</b>	Rabbit
<b>Application</b>	WB,IHC
<b>Reactivity</b>	Human,Mouse,Rat

## Performance

<b>Conjugation</b>	Unconjugated
<b>Modification</b>	Unmodified
<b>Isotype</b>	IgG
<b>Clonality</b>	Polyclonal
<b>Form</b>	Liquid
<b>Storage</b>	Store at 4°C short term. Aliquot and store at -20°C long term. Avoid freeze/thaw cycles.
<b>Buffer</b>	Liquid in PBS containing 50% glycerol, 0.5% BSA and 0.02% New type preservative N.
<b>Purification</b>	Affinity purification

## Immunogen

<b>Gene Name</b>	NSG1
<b>Alternative Names</b>	NSG1; D4S234; Neuron-specific protein family member 1; Brain neuron cytoplasmic protein 1
<b>Gene ID</b>	27065.0
<b>SwissProt ID</b>	P42857.The antiserum was produced against synthesized peptide derived from human NSG1. AA range:112-161

## Application

<b>Dilution Ratio</b>	WB 1:500 - 1:2000. IHC 1:100 - 1:300. ELISA: 1:20000..
<b>Molecular Weight</b>	26kD

**Product Name: NEEP21 Rabbit Polyclonal Antibody**  
**Catalog #: APRab14541**

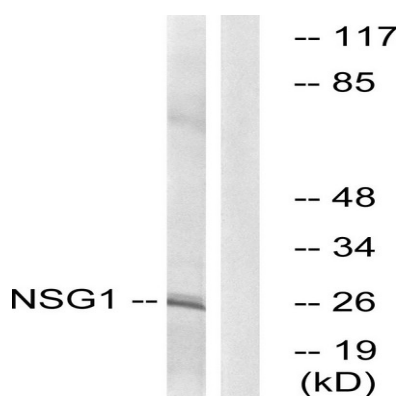


## Background

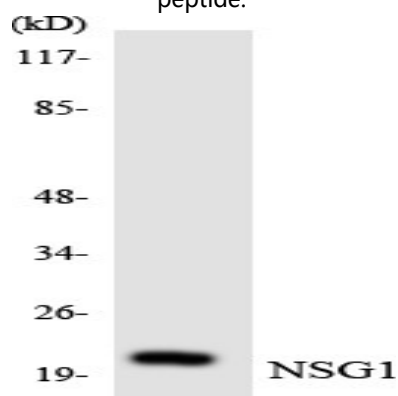
similarity:Belongs to the NSG family.,similarity:Belongs to the NSG family.,

## Research Area

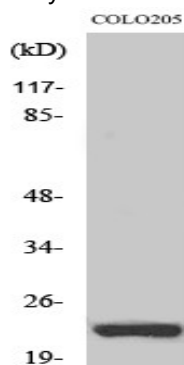
## Image Data



Western blot analysis of lysates from COLO cells, using NSG1 Antibody. The lane on the right is blocked with the synthesized peptide.



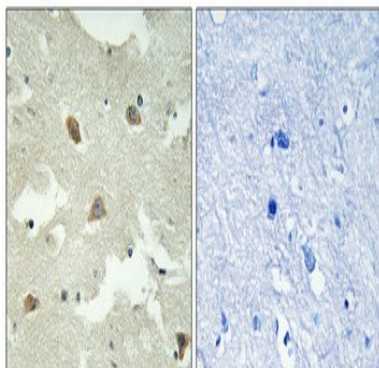
Western blot analysis of the lysates from K562 cells using NSG1 antibody.



Western Blot analysis of various cells using NEEP21 Polyclonal Antibody diluted at 1: 2000

**Product Name: NEEP21 Rabbit Polyclonal Antibody**  
**Catalog #: APRab14541**

---



Immunohistochemical analysis of paraffin-embedded Human brain. Antibody was diluted at 1:100 (4°,overnight) . High-pressure and temperature Tris-EDTA,pH8.0 was used for antigen retrieval. Negative contrl (right) obtained from antibody was pre-absorbed by immunogen peptide.

#### **Note**

For research use only.