

Product Name: NDUB2 Rabbit Polyclonal Antibody
Catalog #: APRab14488



Summary

Production Name	NDUB2 Rabbit Polyclonal Antibody
Description	Rabbit Polyclonal Antibody
Host	Rabbit
Application	WB
Reactivity	Human,Mouse

Performance

Conjugation	Unconjugated
Modification	Unmodified
Isotype	IgG
Clonality	Polyclonal
Form	Liquid
Storage	Store at 4°C short term. Aliquot and store at -20°C long term. Avoid freeze/thaw cycles.
Buffer	Liquid in PBS containing 50% glycerol, and 0.02% New type preservative N.
Purification	Affinity purification

Immunogen

Gene Name	NDUFB2
Alternative Names	
Gene ID	4708.0
SwissProt ID	O95178.Synthesized peptide derived from human protein . at AA range: 40-120

Application

Dilution Ratio	WB 1:500-2000 ELISA 1:5000-20000
Molecular Weight	11kD

Background

The protein encoded by this gene is a subunit of the multisubunit NADH:ubiquinone oxidoreductase (complex I). Mammalian complex I is composed of 45 different subunits. This protein has NADH dehydrogenase activity and

Product Name: NDUB2 Rabbit Polyclonal Antibody
Catalog #: AP Rab14488

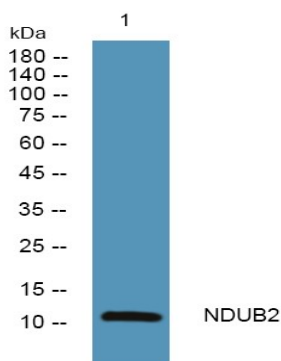


oxidoreductase activity. It plays an important role in transferring electrons from NADH to the respiratory chain. The immediate electron acceptor for the enzyme is believed to be ubiquinone. Hydropathy analysis revealed that this subunit and 4 other subunits have an overall hydrophilic pattern, even though they are found within the hydrophobic protein (HP) fraction of complex I. [provided by RefSeq, Jul 2008], function: Accessory subunit of the mitochondrial membrane respiratory chain NADH dehydrogenase (Complex I), that is believed to be not involved in catalysis. Complex I functions in the transfer of electrons from NADH to the respiratory chain. The immediate electron acceptor for the enzyme is believed to be ubiquinone., similarity: Belongs to the complex I NDUB2 subunit family., subunit: Complex I is composed of 45 different subunits.,

Research Area

Oxidative phosphorylation; Alzheimer's disease; Parkinson's disease; Huntington's disease;

Image Data



Western blot analysis of lysates from K562 cells, primary antibody was diluted at 1:1000, 4° over night

Note

For research use only.