

Product Name: NDF6 Rabbit Polyclonal Antibody
Catalog #: AP Rab14468



Summary

| | |
|------------------------|---------------------------------|
| Production Name | NDF6 Rabbit Polyclonal Antibody |
| Description | Rabbit Polyclonal Antibody |
| Host | Rabbit |
| Application | WB |
| Reactivity | Human,Mouse |

Performance

| | |
|---------------------|--|
| Conjugation | Unconjugated |
| Modification | Unmodified |
| Isotype | IgG |
| Clonality | Polyclonal |
| Form | Liquid |
| Storage | Store at 4°C short term. Aliquot and store at -20°C long term. Avoid freeze/thaw cycles. |
| Buffer | Liquid in PBS containing 50% glycerol, and 0.02% New type preservative N. |
| Purification | Affinity purification |

Immunogen

| | |
|--------------------------|--|
| Gene Name | NEUROD6 ATOH2 BHLHA2 My051 |
| Alternative Names | |
| Gene ID | 63974.0 |
| SwissProt ID | Q96NK8.Synthesized peptide derived from human protein . at AA range: 230-310 |

Application

| | |
|-------------------------|----------------------------------|
| Dilution Ratio | WB 1:500-2000 ELISA 1:5000-20000 |
| Molecular Weight | 37kD |

Background

This gene is a member of the NEUROD family of basic helix-loop-helix transcription factors. The encoded protein may be involved in the development and differentiation of the nervous system. [provided by RefSeq, Nov 2012],function:Activates E

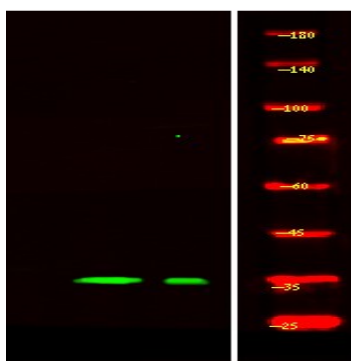
Product Name: NDF6 Rabbit Polyclonal Antibody
Catalog #: APRab14468



box-dependent transcription in collaboration with TCF3/E47. May be a trans-acting factor involved in the development and maintenance of the mammalian nervous system. Transactivates the promoter of its own gene.,similarity:Contains 1 basic helix-loop-helix (bHLH) domain.,subunit:Efficient DNA binding requires dimerization with another bHLH protein.,

Research Area

Image Data



Western Blot analysis of Hela lysis, using primary antibody at 1:1000 dilution. Secondary antibody was diluted at 1:10000

Note

For research use only.